

HERITAGE QUALITY ELEVATOR

Shanghai Fuji
Elevator & Escalator
since 1992



SHANGHAI FUJI ELEVATOR CO., LTD.

No. 7505-7515 Daye Highway, Fengxian District, Shanghai, China

EXPORT PLATFORM

Shanghai Fuji Ritzer International Trade Co., Ltd.

Export Email: export-shfuji@163.com

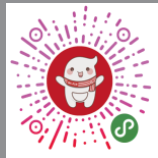
export@shangha-fuji.com

Export Tel: +862157559736

Website: www.shanghai-fuji.com



Wechat



Applet



Website



Facebook

YG MACHINE ROOM PANORAMA ELEVATOR

WG MACHINE ROOM-LESS PANORAMA ELEVATOR



SHANGHAI FUJI ELEVATOR



SHANGHAI FUJI

PANORAMA ELEVATOR

Safe and Reliable, Efficient and Energy Saving

Beautiful and Elegant, Humanized and Considerate

Smooth and Comfortable, Sturdy and Durable

Mastery Inside and Out, Excellence Endures

Inheriting the Spirit of Craftsmanship, Creating Masterful Works

Shanghai Fuji Panorama Elevator

Perfectly Aligning with the Design Philosophy of Commercial Projects

Outstanding Safety and Smooth Performance

Providing Comfortable Elevator Experiences and Efficient Traffic

Solutions for Office Buildings and Commercial Structures

CONTENTS

About US	P01
----------	-----

Certifications	P02
----------------	-----

Function Characteristics	P03
--------------------------	-----

Standard Cabin	P07
----------------	-----

Optional Cabin	P08
----------------	-----

Handrail Optional	P16
-------------------	-----

Cabin Operating Panel	P17
-----------------------	-----

Landing Operating Panel	P19
-------------------------	-----

List Of Configuration Specification	P21
-------------------------------------	-----

IoT System Realtime	P23
---------------------	-----

Put Clients First	P24
-------------------	-----

About Us

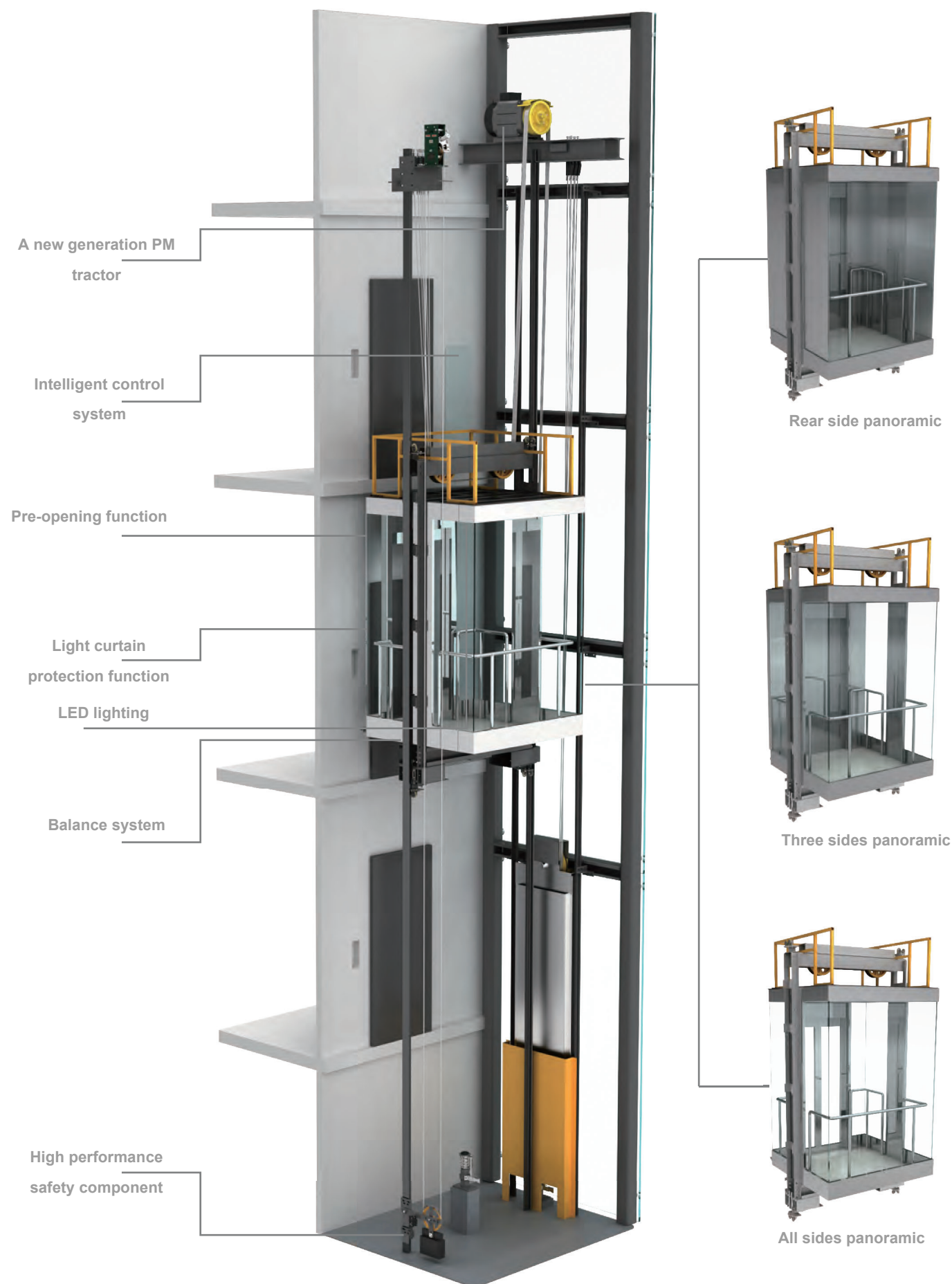


Established in 1992, SHANGHAI FUJI ELEVATOR is pioneer, practitioner and innovator of China elevator industry. We are one of the earliest forerunners of Chinese national elevator brands, owning A-class qualification in manufacturing, installation, modernization and maintenance. Focusing on elevator industry for nearly 30 years, we are dedicated to provide safe, high-quality, and trustworthy elevator, escalator and moving walk to customers worldwide.

- Founded in Shanghai in 1992, one of the earliest Chinese elevator companies
- In 1992, the 1st Chinese elevator company to introduce Japanese Fuji VVVF technology to China
- Member of Shanghai Elevator Trade Association
- Member of China Elevator Association
- China Top 15 Elevator Company
- In 2002 built one of the earliest elevator test towers in China with 76m height
- ISO9001, ISO14001 and ISO45001 certified company
- EN81-20 & 50 Certified Products
- Among the first Chinese elevator brands entering the supplier list of China government procurement elevator
- The best service brand for China government procurement elevator
- Ranked 31th among Top 50 Brand Value of China Machinery Manufactures
- Shanghai Famous Brand, Shanghai High-Tech Enterprise and Shanghai Star Integrity Enterprise
- Launched brand ambassador "An-an"
- Established Shanghai's first elevator safety science popularization practice base

Certificates





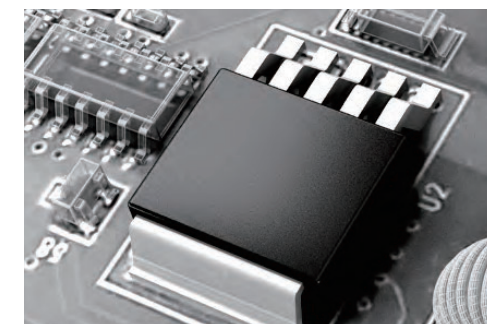
Function Characteristics

Safe and Reliable

Shanghai Fuji Elevator cares for every passenger, adhering to a comprehensive and meticulous approach to safety in product design. With a commitment to exceeding industry standards, we tailor elevator products with advanced technical requirements. This reflects our attention to detail, pursuit of perfection, and unwavering dedication to excellence.

Intelligent Control System

Dual 32-bit microprocessors synchronize elevator drive and control, delivering precision and efficiency. The computation speed has been upgraded from microseconds to nanoseconds. Combined with Canbus and Modbus communication protocols, data transmission becomes more efficient, ensuring passenger safety.

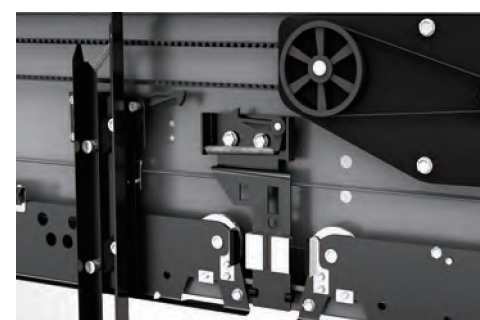


Quality Safety Components

The buffer featuring oil-gas separation technology provides outstanding consistency in cushioning performance. Together with high-performance overspeed governors for upward and downward motion and advanced safety gears, these three key safety components establish a robust elevator safety system.

Efficient Balancing System

Shanghai Fuji Elevator panorama elevators are equipped with expansive panoramic viewing panels, seamlessly integrating architectural aesthetics. Utilizing an advanced balancing system designed with specialized software, they enhance ride comfort for an exceptional passenger experience.



High Stability Door System

The new-generation door operating system adopts optimized variable frequency closed-loop control technology, featuring synchronous belt transmission and a variable frequency motor for direct drive of the car door. With fewer transmission components, it ensures low operational noise and delivers exceptional stability and reliability.

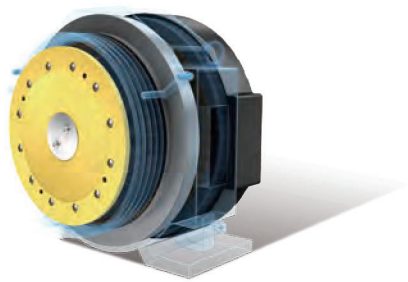
Function Characteristics

Energy Saving and Environmental Protection

Concentration, dedication and exquisiteness are the essence of Shanghai's industrial spirit and also the responsibility and mission of SHANGHAI FUJI ELEVATOR. We fulfill our commitment to a green future by investing in new technologies and adhere to people orientation and inheritance of ingenuity from car design, accessories and every design.

A New Generation of PM Motor

The new-generation PM permanent magnet synchronous motor system features an increased motor count of 32 levels, resulting in lower heat generation and longer lifespan. Its thermal efficiency meets the requirements of Class 2 energy efficiency standards.



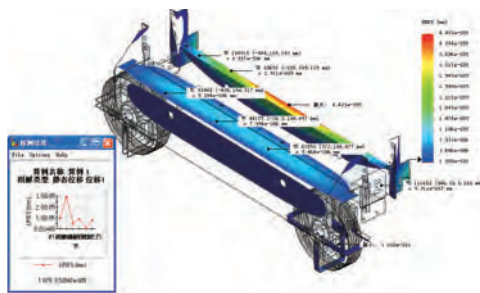
LED Lighting System

LED lights have an exceptionally long lifespan, lasting 20 times longer than regular bulbs. Their energy consumption is only 10% of incandescent bulbs and 50% of fluorescent lights, significantly reducing energy loss.



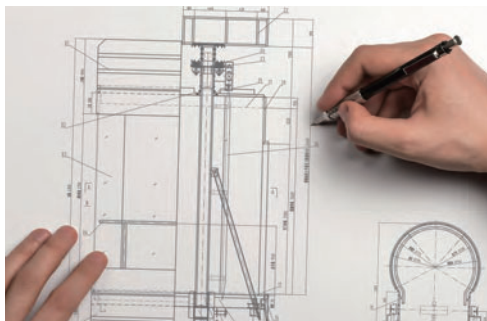
Finite Element Analysis Design

Using professional 3D design software and finite element analysis (FEA) theory, we conduct scientific product design. Various mechanical analyses are performed on the main components of the elevator to ensure the product remains stable and reliable throughout its lifecycle.



Aesthetic Design, Viewing Becomes the Scene

Shanghai Fuji Elevator panorama elevators feature "mastery inside and out," integrating "kinetic aesthetics" and "architectural aesthetics" in their design. With a variety of shapes available, including semicircular and curved options, they enhance the visual appeal of the building by improving its height and overall aesthetics.



Standard Cabin

TS981

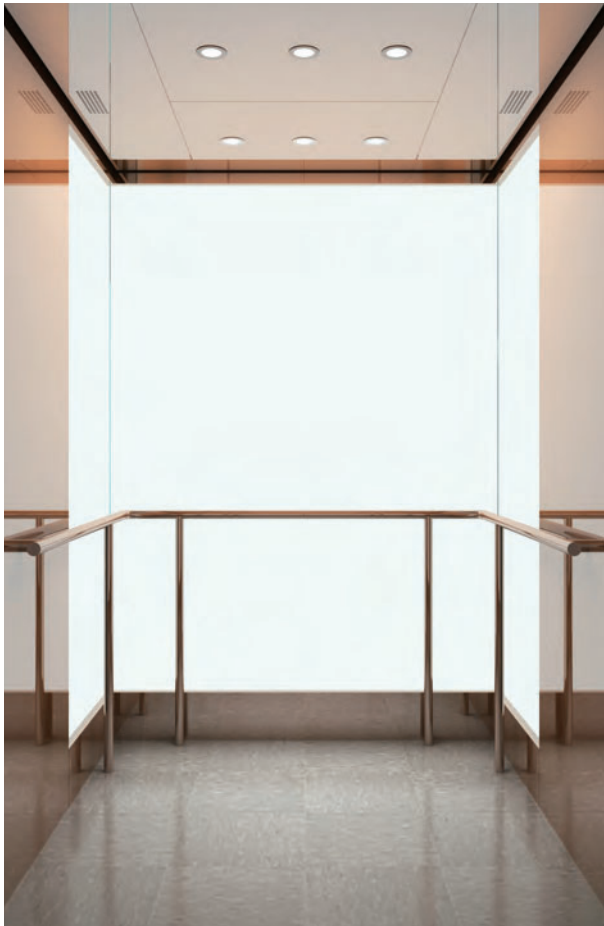
- Decoration cover: FLY881
- Ceiling: Mirror SS DT012
- COP: CZ015DYFW
- Front wall: Hairline SS
- Back wall: Framed glass
- Side wall: Hairline SS
- Door: Framed glass
- Floor: PVC AM51908
- Handrail: Hairline SS
- Optional Decoration Cover: Hairline SS, Gold hairline SS, Rose gold hairline SS



Optional Cabin

TS980

- Decoration cover: FLY880
- Ceiling: Mirror SS DT012
- COP: CZ015DYFW
- Front wall: Gold hairline SS
- Back wall: Frameless Glass
- Side wall: Gold hairline SS
- Door: Frameless Glass
- Floor: PVC AM51908
- Handrail: Gold SS
- Optional Decoration Cover: Hairline SS, Gold hairline SS, Rose gold hairline SS



Optional Cabin

TS982

- Decoration cover: FLY882
- Ceiling: Special Design+ LED
- COP: CZ015M3ZWFW
- Front wall: Hairline SS
- Back wall: Circle Glass
- Side wall: Hairline SS + Mirror SS
- Door: Hairline SS
- Floor: Marble
- Handrail: Gold SS
- Optional Decoration Cover: Bronze Coating Steel, Rose gold Coating steel



Optional Cabin

TS983

- Decoration cover: LED Lighting FLY883
- Ceiling: Special Design + LED
- COP: CZ015M3ZWFW
- Front wall: Hairline SS
- Back wall: Circle Glass
- Side wall: Hairline SS
- Door: Hairline SS
- Floor: Marble
- Handrail: Hairline SS
- Optional Decoration Cover: Hairline SS, Gold hairline SS, Rose gold hairline SS



Optional Cabin

TS984

- Decoration cover: LED Lighting FLY884
- Ceiling: Double type + LED LUX118
- COP: CZ015M4ZWFW
- Front wall: Hairline SS
- Back wall: Circle Glass
- Side wall: Hairline SS
- Door: Hairline SS
- Floor: Marble
- Handrail: Hairline SS
- Optional Decoration Cover: Hairline SS, Gold hairline SS, Rose gold hairline SS



Optional Cabin

TS985

- Decoration cover: FLY885
- Ceiling: Mirror SS + LED DT015
- COP: CZ015M4ZWMG
- Front wall: Rose gold hairline SS
- Back wall: Glass
- Side wall: Rose gold SS + Glass
- Door: Framed glass
- Floor: Marble
- Handrail: Rose gold hairline SS
- Optional Decoration Cover: Bronze Coating Steel, Rose gold Coating steel



Optional Cabin

TS986

- Decoration cover: FLYBB6
- Ceiling: Double type+ LED SLM051
- COP: CZ015M4ZWFW
- Front wall: Framed Glass
- Back wall: Glass
- Side wall: Hairline SS + Glass
- Door: Framed glass
- Floor: Marble
- Handrail: Mirror SS
- Optional Decoration Cover: Hairline SS, Gold hairline SS, Rose gold hairline SS



Optional Cabin

TS987

- Decoration cover: FLYBB7
- Ceiling: Double type + LED DT012
- COP: CZ015M4ZWJW
- Front wall: Hairline SS
- Back wall: Glass
- Side wall: Hairline SS + Glass
- Door: Framed glass
- Floor: Marble
- Handrail: Mirror SS
- Optional Decoration Cover: Hairline SS, Gold hairline SS, Rose gold hairline SS



Optional Cabin



G011

Decoration cover: Gold hairline SS



G012

Decoration cover: Coating steel



G008

Decoration cover: Coating steel



G005

Decoration cover: Coating steel

Handrail (Optional)



FS011
Gold SS



FS012
Gold SS



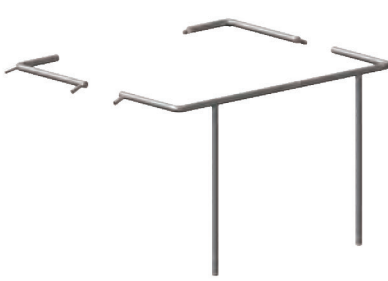
FS013
Mirror SS



FS014
Mirror SS



FS015
Mirror SS



FS016
Mirror SS



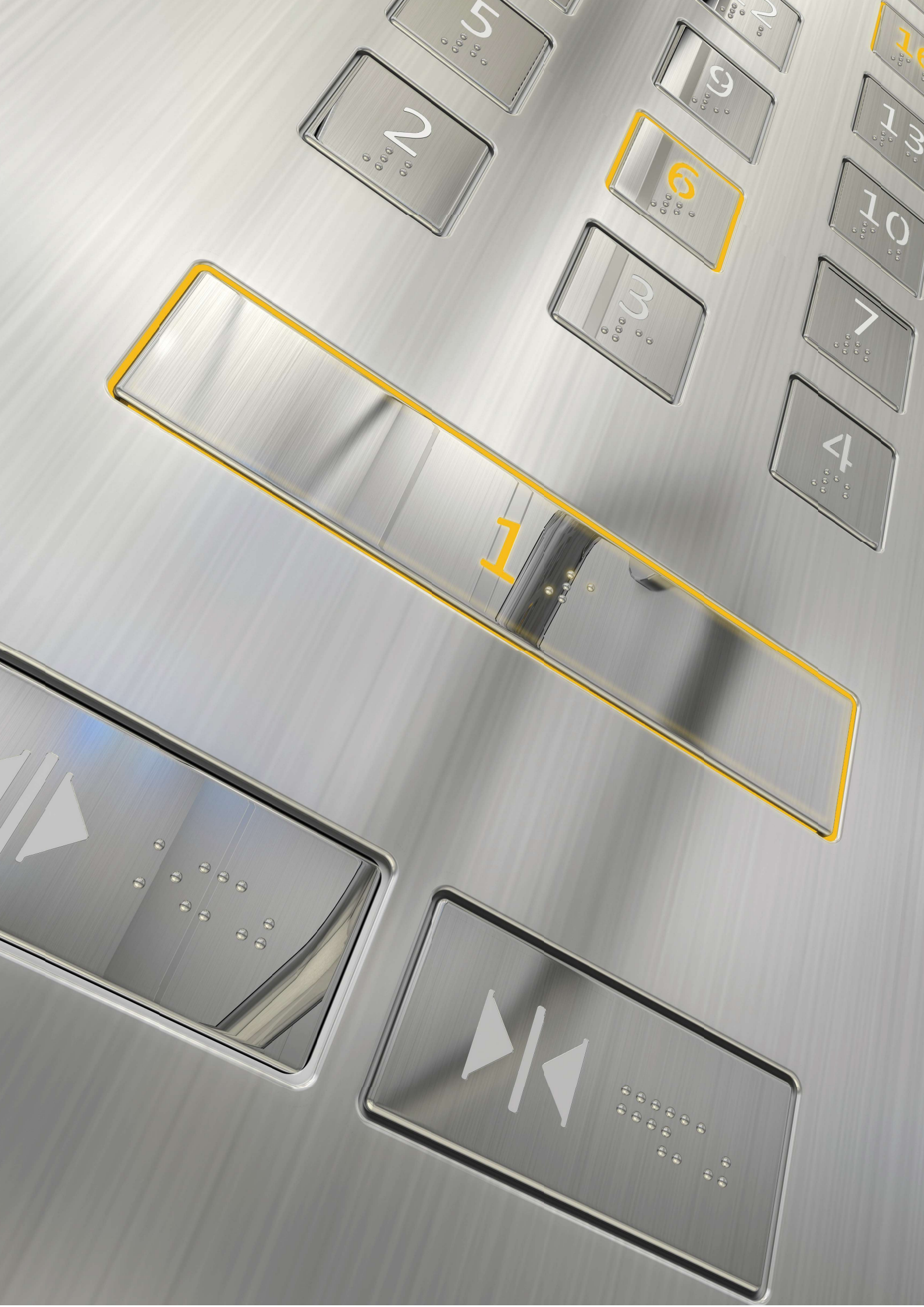
FS017
Mirror SS



FS018
Mirror SS



FS019
Gold SS



Cabin Operating Panel



CZ015DYFW ●

Material: Hairline SS
Display: LED
Button: Mirror SS



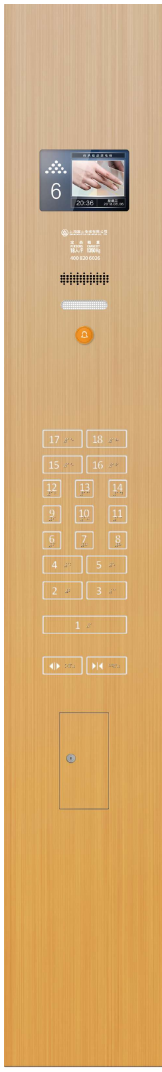
CZ015M3ZFW ●

Material: Hairline SS
Display: 7 -inch
Button: Mirror SS combined
type button



CZ015M4ZFW ●

Material: Hairline SS
Display: 1 0-inch
Button: Hairline SS,
combined-type



CZ015M4ZWMG ●

Material: rose gold mirror SS
Display: 1 0 inch
Button: Rose gold mirror SS,
combined-type

- Standard
- Optional



Landing Operating Panel

GWZ031DN ●

Material: Hairline SS
Display: LED
Button: Hairline SS round button
Installation way: Easy fit type



GWZ031DM ○

Material: Hairline SS
Display: LED
Button: Hairline SS round button
Installation way: Easy fit type



GWZ031N ○

Material: Hairline SS
Display: No
Button: Hairline SS round button
Installation way: Easy fit type



GWZ030DN ○

Material: Hairline SS
Display: LED
Button: Hairline SS round button
Installation way: Easy fit type



GWZ301 ●

Material: Hairline SS
Display: 7 segments
Button: Hairline SS round button
MA2P07 Installation way: Easy fit type



GWZ300 ○

Material: Hairline stainless steel
Display: 7 segments
Button: Hairline SS round button
MA2J00 Installation way: Easy fit type



GWZ029DN ○

Material: Glass + Hairline SS +
High hardness plastic 、 Display:
LED
Button: Hairline SS round button
Installation way: Easy fit type



GWZ029DM ○

Material: Glass + Hairline SS +
High hardness plastic
Display: LED
Button: Hairline SS round button
Installation way: Easy fit type



- Standard
- Optional

List of Configuration Specification

<div>S</div> WVF control	<div>S</div> Attendant's operation
<div>S</div> Vector control	<div>S</div> Independent operation
<div>S</div> Full collective control	<div>S</div> Dot-matrix floor display
<div>S</div> Inspection operation	<div>S</div> Scrolling display of moving direction
<div>S</div> Slow self-rescue operation	<div>S</div> Automatic correction of floor position signal
<div>S</div> Clock control	<div>S</div> Elevator locking service
<div>S</div> Door opening time automatic control	<div>S</div> Protective measures for guaranteeing no door opening outside
<div>S</div> Door opening outside for current layer	<div>S</div> Light curtain protection of door
<div>S</div> Advanced door closing for door-close button	<div>S</div> Overload protection measures
<div>S</div> Door opening for door-open button	<div>S</div> Anti-nuisance protection
<div>S</div> Repeated door opening;	<div>S</div> Protection of reversed movement
<div>S</div> Exchange stop	<div>S</div> Anti-slip protection (running time limiter)
<div>S</div> Cancellation of false command	<div>S</div> Anti car-slip protection
<div>S</div> Automatic call cancellation in reversed travelling	<div>S</div> Terminal over-travel prevention
<div>S</div> Direct parking	<div>S</div> Contact testing and protection of security contactor relay
<div>S</div> Full-load bypass	<div>S</div> Fault protection of speed governor
<div>S</div> Automatic power-off of fan and illumination during waiting time	<div>S</div> Main controller CPU WOT protection
<div>S</div> Automatic return to the main floor	<div>S</div> Emergency return in case of fire
<div>S</div> Liquid crystal display operation	<div>S</div> Firefighter's operation
<div>S</div> Simulation speed preset	<div>S</div> Car arrival gong
<div>S</div> Digital multi-stage speed preset	<div>S</div> Forced door closing
<div>S</div> Fault history recording	<div>S</div> Emergency lighting
<div>S</div> Floor information self-studying	<div>S</div> 5-ways intercom
<div>S</div> Free setting of service floor	<div>S</div> Bell alarm
<div>S</div> Free setting of various floor indication characters	<div>S</div> Preload compensation
<div><div>S</div>Standard functions<div>O</div>Optional functions</div>	

List of Configuration Specification

<div>S</div> Acceleration-section stopping response	<div>O</div> Energy regeneration function
<div>S</div> Galloping prohibition function	<div>O</div> Accessibility
<div>S</div> Main floor verification	<div>O</div> COP for the disabled
<div>S</div> Button adhesion inspection	<div>O</div> IC card service in the hall
<div>S</div> Trips recording	<div>O</div> Leveling during power failure
<div>S</div> Running time recording	<div>O</div> Door opening and then leveling
<div>S</div> Automatic opening in the case of abnormal door lock	<div>O</div> VIP floor service
<div>S</div> Car accidental movement protection device	<div>O</div> Remote inspection monitoring center
<div>S</div> Automatic detection of the braking force	<div>O</div> Service floor elevator switching by switch control and group
<div>O</div> Operation of sub-operating panel	<div>O</div> Intelligent Cube™ , the internet of things
<div>O</div> Advanced door opening	
<div>O</div> Voice annunciator	
<div>O</div> Community (or building) monitoring	
<div>O</div> Parallel operation	
<div>O</div> Group-control operation	
<div>O</div> Operation of standby power supply for building	
<div>O</div> Seismic operation	
<div>O</div> Up-peak service	
<div>O</div> Down-peak service	
<div>O</div> Dispersed elevator waiting	
<div>O</div> IC card floor service control in the car	
<div>O</div> Operation of rear-door operating panel	
<div>O</div> Independent control of front and rear doors	
<div>O</div> Arrival hall lantern	
<div>O</div> Arrival gong	
<div><div>S</div>Standard functions<div>O</div>Optional functions</div>	

Intelligent Cub, The IoT System Realtime



Monitoring, just in time services

Smart Cloud

The full-life-circle equipment operation conditions of elevators are collected, pretreated and transmitted to the cloud platform. The high network safety guarantees that it can run applications and streaming media and handle emergency calls.

Smart Platform

It adopts big data analysis and artificial intelligence technologies to analyze all elevator information so it can give an early warning for maintenance work and remind maintenance personnel of maintenance work when problems occur or the service life has expired.

Smart Internet

Intelligent cube, the various terminal devices can access the IoT system information to facilitate the use and maintenance of elevators much more.

Optional

Put Clients First, Service Is Life



Five-star Service Team

The five-star service team of SHANGHAI FUJI ELEVATOR has outstanding technical skills and high-level service ability and provides efficient comfortable excellent experiences for users.

An after-sales service network Covering the whole China

SHANGHAI FUJI ELEVATOR has set up branches in all major cities in China to respond in the first place and quickly provide spare parts for local customers.

Distribution network across the globe

SHANGHAI FUJI ELEVATOR has set up distributor networks in many countries and regions across the globe with products and services serving many iconic buildings.

