

HERITAGE QUALITY ELEVATOR

Shanghai Fuji  
Elevator & Escalator  
since 1992



SHANGHAI FUJI ELEVATOR CO., LTD.

No. 7505-7515 Daye Highway, Fengxian District, Shanghai, China

EXPORT PLATFORM

Shanghai Fuji Ritzer International Trade Co., Ltd.

Export Email: export-shfuji@163.com

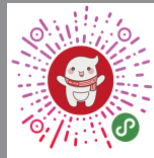
export@shanghai-fuji.com

Export Tel: +862157559736

Website: www.shanghai-fuji.com



Wechat



Applet



Website



Facebook

YB MACHINE ROOM HOSPITAL ELEVATOR

WB MACHINE ROOM-LESS HOSPITAL ELEVATOR



SHANGHAI FUJI ELEVATOR



# SHANGHAI FUJI HOSPITAL ELEVATOR

**Human Caring, Reliable and Secure, Green and  
Energy Saving**

We have never stopped exploring the diversified vertical transport.  
We stick to our inheritance and deeply understands breakthroughs  
and innovations.

Elevators are not only transportation, but also the extension between  
the space and human interaction.

Special environment calls for the specific elevator products.

Shanghai Fuji Elevator hospital elevator series is specially designed  
for special medical environment.

Reliable and secure, green and energy saving, flexible and human  
caring.

## CONTENTS

About US	P01
Certifications	P02
Function Characteristics	P03
Standard Cabin	P06
Optional Cabin	P07
Cabin Operating Panel	P09
Landing Operating Panel	P10
Shaft Layout	P11
List Of Configuration Specification	P13
IoT System Realtime	P15
Put Clients First	P16



# About Us



Established in 1992, SHANGHAI FUJI ELEVATOR is pioneer, practitioner and innovator of China elevator industry. We are one of the earliest forerunners of Chinese national elevator brands, owning A-class qualification in manufacturing, installation, modernization and maintenance. Focusing on elevator industry for nearly 30 years, we are dedicated to provide safe, high-quality, and trustworthy elevator, escalator and moving walk to customers worldwide.

- Founded in Shanghai in 1992, one of the earliest Chinese elevator companies
- In 1992, the 1st Chinese elevator company to introduce Japanese Fuji VVVF technology to China
- Member of Shanghai Elevator Trade Association
- Member of China Elevator Association
- China Top 15 Elevator Company
- In 2002, built one of the earliest elevator test towers in China with 76m height
- ISO9001, ISO14001 and ISO45001 certified company
- EN81-20 & 50 Certified Products
- Among the first Chinese elevator brands entering the supplier list of China government procurement elevator
- The best service brand for China government procurement elevator
- Ranked 31th among Top 50 Brand Value of China Machinery Manufactures
- Shanghai Famous Brand, Shanghai High-Tech Enterprise and Shanghai Star Integrity Enterprise
- Launched brand ambassador "An-an"
- Established Shanghai's first elevator safety science popularization practice base

# Certificates





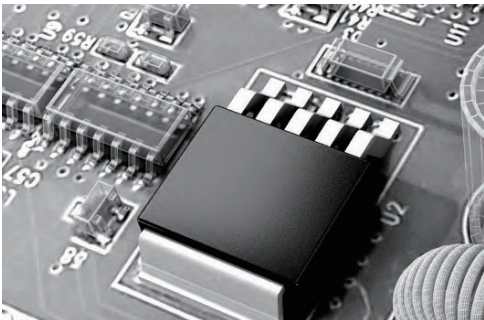
# Function Characteristics

## Multilevel Security, Doubled Reassurance

Security is our primary life demands. "Safety first" is not only a slogan but also needs to be put into practice. Always adhering to the elevator security as the core standard of the product R&D, Shanghai Fuji Elevator is able to satisfy the security requirements under the medical environment with its high stability control system and multiple safety protection device such as three major core safety components.

## Control-driven Integrated High Stability Control System

It uses a new generation control-driven integrated system. Based on advanced driving algorithm, precision control technology, high speed, long distance and large data transmission CANBUS bus serial communication, advanced fault self -diagnosis and daily record function, it has strong anti-electromagnetic interference ability, strong electrostatic discharge and system high stability and reliability.



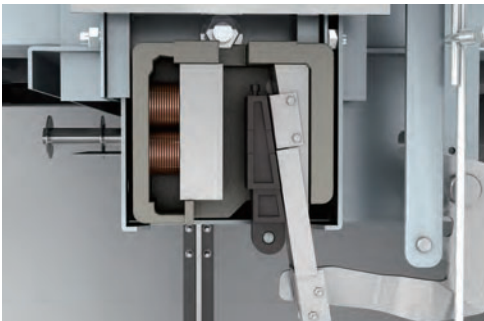
## Diverse Safety Protection System

Shanghai Fuji Hospital Elevator is integrated with brake force auto detection, anti-skid car protection, reverse operation protection, antiskid protection of steel wire rope, up-down over-speed monitoring, car accidental movement protection, abnormal automatic opening protection of door lock and other diverse safety protection system.



## Highly Reliable Buffer with Oil-gas Separation

It strictly selects the high qual ity buffer and innovates the gas-oil separation design with good cushioning property uniformity, corrosion resistant layer on the surface and strong environment applicability.



## Strict Selection of Safety Component

Shanghai Fuji Hospital Elevator strictly selects the safety components with its rigorous development and design details and strict quality standards. All qualified safety components can be used after passing the dual inspection and certification of Shanghai Fuji Elevator Technical Center and Quality Center. Optimum selection of tens of millions of components is only for every safety closed loop.



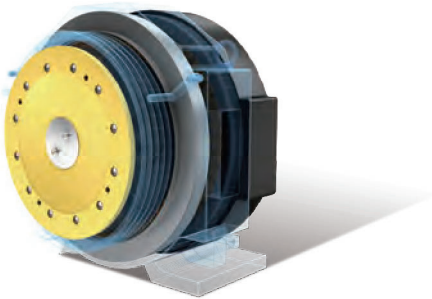
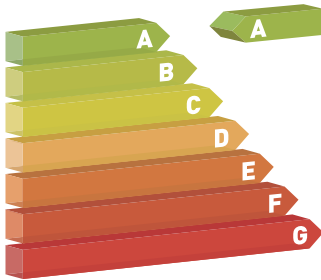
# Function Characteristics

## Energy Saving, Environmentally Friendly and Humanized Design

Strictly following the concept of green low-carbon, energy conservation and environmental protection, Shanghai Fuji Hospital Elevator is able to realize low energy consumption and green low carbon with its advanced intelligent technology, high quality innovative design, excellent performance, high efficiency and energy conservation in the public health scene.

## Level A Energy Efficiency Certification

Based on intelligent technology and innovative component design, Shanghai Fuji Hospital Elevator is able to reach the energy consumption level of A standard, save up to 70% of electricity expenditure and reduce carbon emissions by 2600 kg annually.

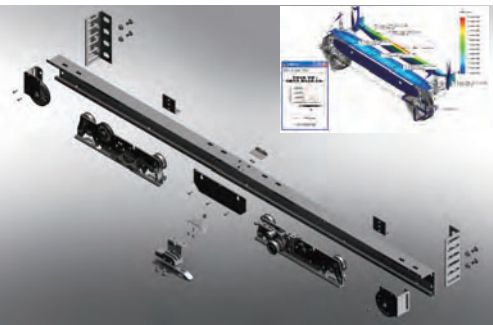


## New Generation Permanent Magnet Synchronous Motor

With the new generation permanent magnet synchronous motor, the number of poles on motor can be increased to 32, generating less heat and achieving secondary energy efficiency. The design of two independent block brake magnetic circuits significantly reduces brake energy consumption, noise level and temperature rise.

## Green Energy-saving Led Lighting

Shanghai Fuji Hospital Elevator uses the high-end LED devices with long life span and high luminous efficiency. The power consumption is only 10% of the filament lamp and 50% of the fluorescent lamp with no flash or ultraviolet pollution, which can significantly reduce energy consumption and environmental burden.



## FEA Computational Optimization Design

Relying on the professional FEA (Finite Element Analysis), Shanghai Fuji Elevator carries out mechanical analysis and research on the main components, further optimizes the component structure and guarantees an environmentally friendly product in its life cycle.

# Function Characteristics

## Human Caring, Comforting, Relaxing

Special medical environments require special care. Shanghai Fuji Hospital Elevator takes into full consideration the unique requirements of medical settings and the people who use them. Thoughtful design is incorporated into aspects such as the lighting environment and cleanliness of the space, as well as barrier-free access to the elevator, providing human-centered care for healthcare professionals and patients, ensuring both comfort and peace of mind.

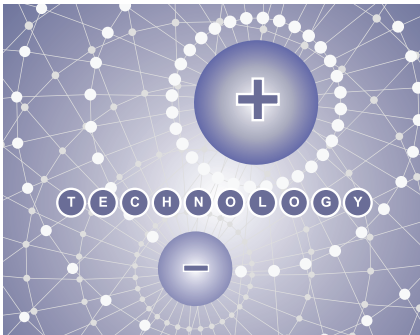


### High Comfort Subdued Light Space

Tailored for special medical environments, Shanghai Fuji Hospital Elevator thoughtfully incorporates a soft lighting system. The LED gentle light source, combined with various innovative light environment adjustment technologies, ensures a soft and bright illumination while achieving uniformity in brightness and color temperature across the entire space. Even when focusing on the ceiling light, it does not cause any discomfort.

## Anion Sterilization System

To meet the high cleanliness requirements of medical environments, Shanghai Fuji Hospital Elevator's medical elevator series comes standard with a negative ion sterilization system. Utilizing the principle of free electrons in negative ions to kill and inhibit bacteria, it purifies the cabin space, restoring a fresh and healthy elevator environment.



### Human Care for Elevator Riding

Shanghai Fuji Hospital Elevator takes full consideration of the diverse and special user groups in medical scenarios. It comes fully equipped with a disability-friendly control panel and handrails, making it more convenient for special patient groups and medical staff to use, ensuring a barrier-free elevator experience throughout the journey.

# Standard Cabin

## CS050-B

**Ceiling:** Double-layer ceiling + LED frameless lighting SLM050-B

**Control Panel:** CP210

**Emergency Button:** DP290

**Floor:** PVC AM51908

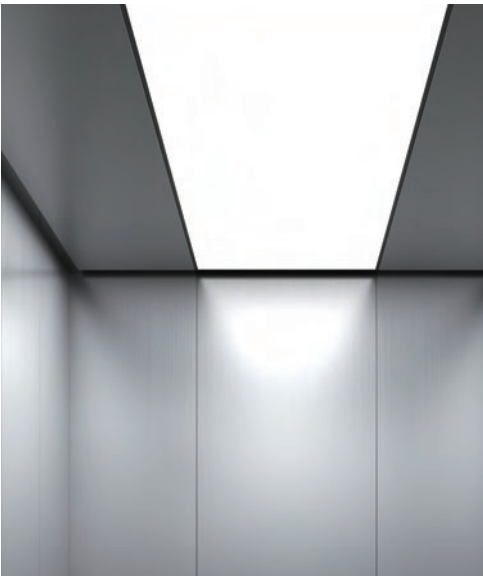
**Handrail:** FS008

**Rear Wall:** Hairline stainless steel

**Side Walls:** Hairline stainless steel

**Front Wall:** Hairline stainless steel

**Baseboard:** Hairline stainless steel





Optional Cabin

CS118-B

- Ceiling: Double-layer ceiling + LED
- CS118-B
- Control Panel: CZ015DYFW
- Emergency Button: DP290
- Floor: PVC AM51908
- Handrail: FS008
- Rear Wall: Hairline stainless steel + mirrored stainless steel
- Side Walls: Hairline stainless steel
- Front Wall: Hairline stainless steel
- Baseboard: Hairline stainless steel



Optional Cabin

CS051-B

- Ceiling: Full lighting LED SLM051
- Control Panel: CP210
- Emergency Button: DP290
- Floor: PVC AM51908
- Handrail: FS007
- Rear Wall: Mirrored stainless steel
- Side Walls: Hairline stainless steel
- Front Wall: Hairline stainless steel
- Baseboard: Hairline stainless steel



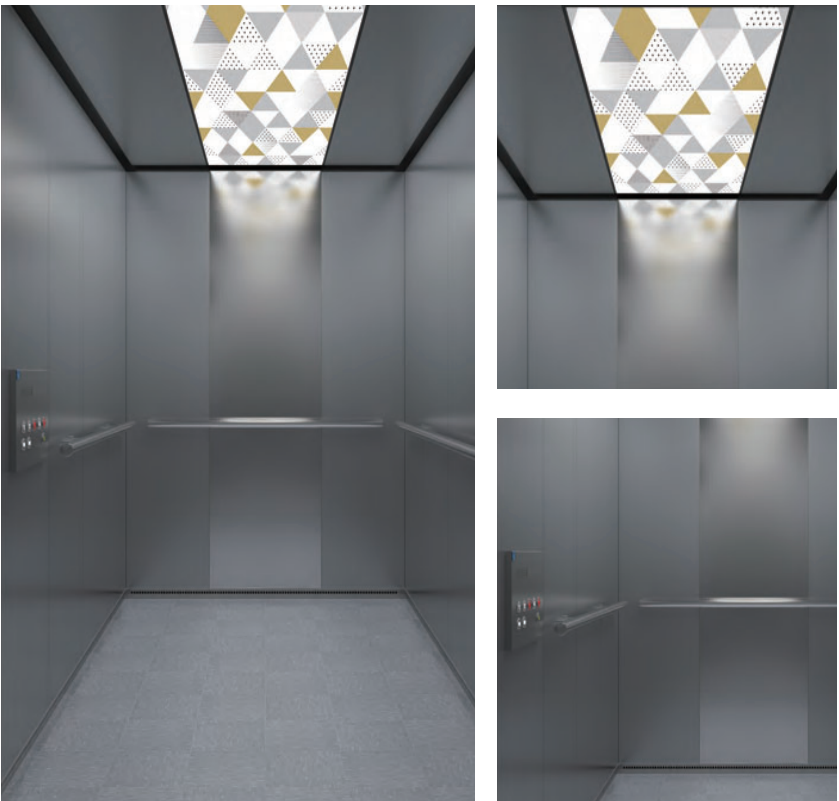
CD012-B

- Ceiling: Stainless steel + LED DT012-B
- Control Panel: CZ015DYFW
- Emergency Button: DP290
- Floor: PVC AM51903
- Handrail: FS007
- Rear Wall: Mirrored stainless steel
- Side Walls: Hairline stainless steel
- Front Wall: Hairline stainless steel
- Baseboard: Hairline stainless steel



CS050A-B

- Ceiling: Double-layer ceiling + LED frameless lighting SLM050
- Control Panel: CZ015DYFW
- Emergency Button: DP290
- Floor: PVC AM51908
- Handrail: FS005
- Rear Wall: Hairline stainless steel + mirrored stainless steel
- Side Walls: Hairline stainless steel
- Front Wall: Hairline stainless steel
- Baseboard: Hairline stainless steel



# Cabin Operating Panel



CP210 ●

Material: Hairline stainless steel  
Display: 7 sections  
Button: Stainless steel  
\*Match for LOP GWZ300



CP211 ○

Material: Hairline stainless steel  
Display: 7 sections  
Button: Stainless steel  
\*Match for LOP GWZ301



DP290 ○

Material: Hairline stainless steel  
Button: Stainless steel BAS171  
Installation way: Embedded



DP291 ●

Material: Hairline stainless steel  
Button: Stainless steel BAS171  
Installation way: Easy fit type



GW303 ●

Material: Hairline stainless steel  
Display: 7 sections

- Standard
- Optional

# Landing Operating Panel

GWZ300 ●

Material: Hairline stainless steel  
Display: 7 segments  
Button: Hairline SS round button  
MA2J00  
Installation: Easy fit type



GWZ031DM ○

Material: Hairline stainless steel  
Display: LED  
Button: Hairline SS round button  
Installation way: Easy fit type



GWZ301 ○

Material: Hairline stainless steel  
Display: 7 segments  
Button: Hairline SS round button  
MA2P07 Installation way: Easy fit type



GWZ031DN ●

Material: Hairline stainless steel  
Display: LED  
Button: Hairline SS round button  
Installation way: Easy fit type



# Handrail (Optional)



FS001  
Stainless steel



FS005  
Stainless steel

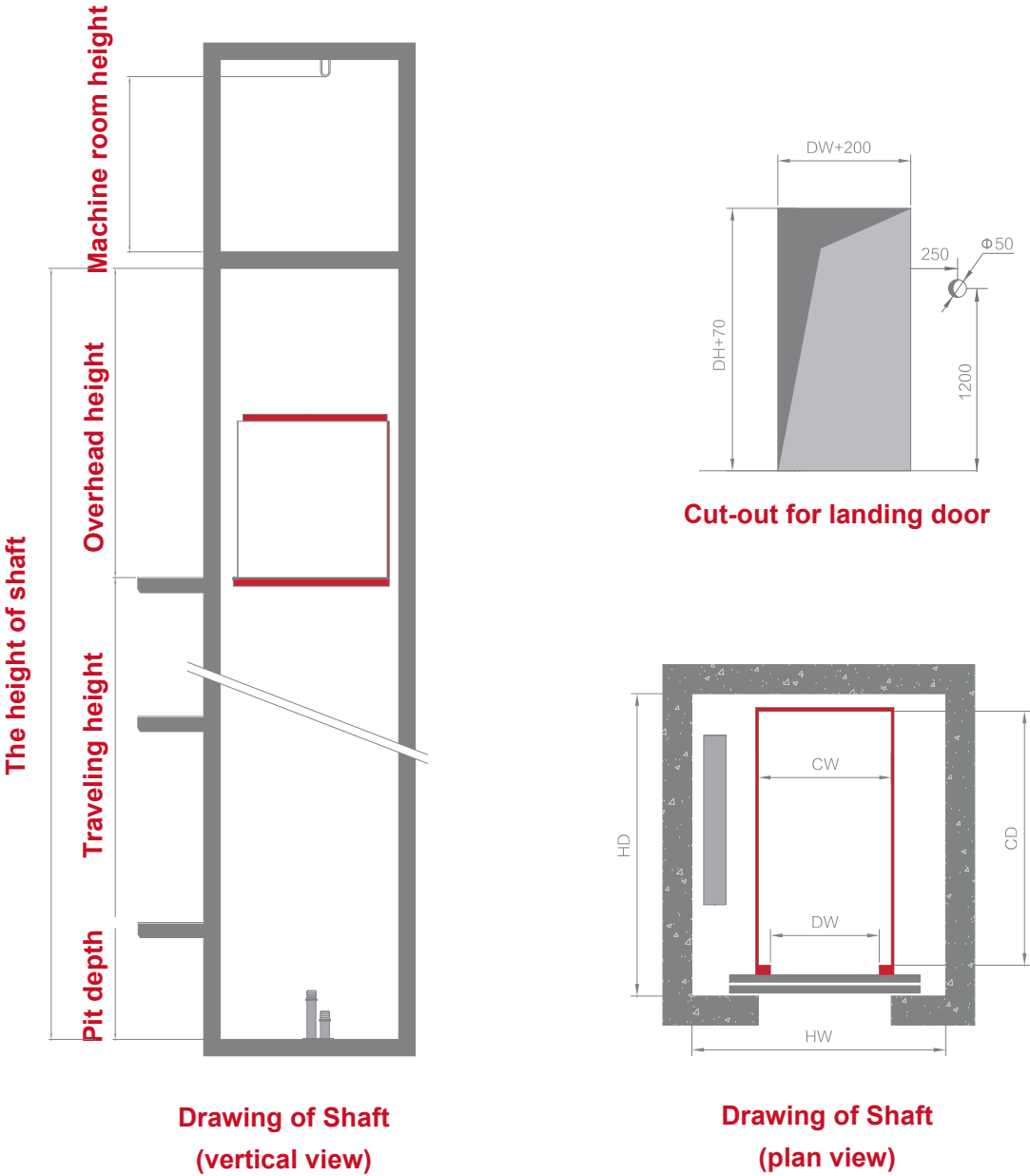


FS007  
Stainless steel



FS008  
Stainless steel

Shaft Layout for MR

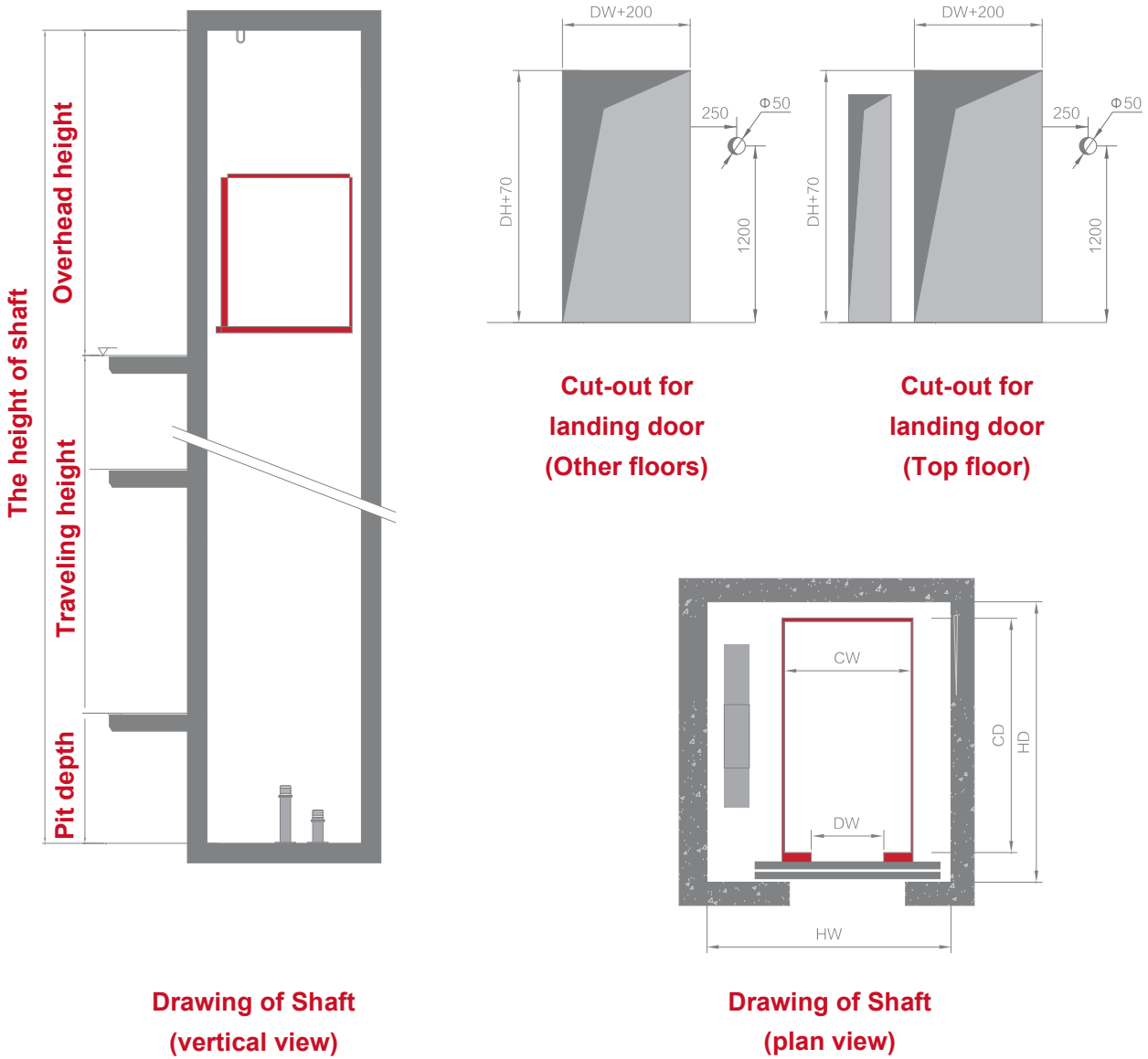


Technical Specification Sheet

Capacity (Kg)	Car Size (mm)	Center Open Door (mm)	Shaft Size (mm)
	Width CW X Depth DW	Width DW X Height DH	Width HW X Depth HD
1600	1500 × 2300	1100 × 2100	2600 × 2800

Speed (m/s)	Pit Depth (mm)	Overhead Height (mm)	Machine Room Height (mm)
	PP	OH	HM
1.0	≥ 1500	≥ 4500	≥ 2500
1.5	≥ 1600	≥ 4700	≥ 2500
1.75	≥ 1600	≥ 4700	≥ 2500

Shaft Layout for MRL



Technical Specification Sheet

Capacity (Kg)	Car Size (mm)	Center Open Door (mm)	Shaft Size (mm)
	Width CW X Depth DW	Width DW X Height DH	Width HW X Depth HD
1600	1500 × 2300	1100 × 2100	2670 × 2800

Speed (m/s)	Pit Depth (mm)	Overhead Height (mm)
	PP	OH
1.0	≥ 1700	≥ 4500
1.5	≥ 1900	≥ 4600
1.75	≥ 1900	≥ 4600



# List of Configuration Specification

<div>S</div> WVF control	<div>S</div> Attendant's operation
<div>S</div> Vector control	<div>S</div> Independent operation
<div>S</div> Full collective control	<div>S</div> Dot-matrix floor display
<div>S</div> Inspection operation	<div>S</div> Scrolling display of moving direction
<div>S</div> Slow self-rescue operation	<div>S</div> Automatic correction of floor position signal
<div>S</div> Clock control	<div>S</div> Elevator locking service
<div>S</div> Door opening time automatic control	<div>S</div> Protective measures for guaranteeing no door opening outside
<div>S</div> Door opening outside for current layer	<div>S</div> Light curtain protection of door
<div>S</div> Advanced door closing for door-close button	<div>S</div> Overload protection measures
<div>S</div> Door opening for door-open button	<div>S</div> Anti-nuisance protection
<div>S</div> Repeated door opening;	<div>S</div> Protection of reversed movement
<div>S</div> Exchange stop	<div>S</div> Anti-slip protection (running time limiter)
<div>S</div> Cancellation of false command	<div>S</div> Anti car-slip protection
<div>S</div> Automatic call cancellation in reversed travelling	<div>S</div> Terminal over-travel prevention
<div>S</div> Direct parking	<div>S</div> Contact testing and protection of security contactor relay
<div>S</div> Full-load bypass	<div>S</div> Fault protection of speed governor
<div>S</div> Automatic power-off of fan and illumination during waiting time	<div>S</div> Main controller CPU WOT protection
<div>S</div> Automatic return to the main floor	<div>S</div> Emergency return in case of fire
<div>S</div> Liquid crystal display operation	<div>S</div> Firefighter's operation
<div>S</div> Simulation speed preset	<div>S</div> Car arrival gong
<div>S</div> Digital multi-stage speed preset	<div>S</div> Forced door closing
<div>S</div> Fault history recording	<div>S</div> Emergency lighting
<div>S</div> Floor information self-studying	<div>S</div> 5-ways intercom
<div>S</div> Free setting of service floor	<div>S</div> Bell alarm
<div>S</div> Free setting of various floor indication characters	<div>S</div> Preload compensation

S

 Standard functions

O

 Optional functions

# List of Configuration Specification

<div>S</div> Acceleration-section stopping response	<div>O</div> Energy regeneration function
<div>S</div> Galloping prohibition function	<div>O</div> Accessibility
<div>S</div> Main floor verification	<div>O</div> COP for the disabled
<div>S</div> Button adhesion inspection	<div>O</div> IC card service in the hall
<div>S</div> Trips recording	<div>O</div> Leveling during power failure
<div>S</div> Running time recording	<div>O</div> Door opening and then leveling
<div>S</div> Automatic opening in the case of abnormal door lock	<div>O</div> VIP floor service
<div>S</div> Car accidental movement protection device	<div>O</div> Remote inspection monitoring center
<div>S</div> Automatic detection of the braking force	<div>O</div> Service floor elevator switching by switch control and group
<div>S</div> Operation of sub-operating panel	<div>O</div> Intelligent Cube™ , the internet of things
<div>O</div> Advanced door opening	
<div>O</div> Voice annunciator	
<div>O</div> Community (or building) monitoring	
<div>O</div> Parallel operation	
<div>O</div> Group-control operation	
<div>O</div> Operation of standby power supply for building	
<div>O</div> Seismic operation	
<div>O</div> Up-peak service	
<div>O</div> Down-peak service	
<div>O</div> Dispersed elevator waiting	
<div>O</div> IC card floor service control in the car	
<div>O</div> Operation of rear-door operating panel	
<div>O</div> Independent control of front and rear doors	
<div>O</div> Arrival hall lantern	
<div>O</div> Arrival gong	

S

 Standard functions

O

 Optional functions

## Intelligent Cub, The IoT System Realtime



## Monitoring, just in time services

### Smart Cloud

The full-life-circle equipment operation conditions of elevators are collected, pretreated and transmitted to the cloud platform. The high network safety guarantees that it can run applications and streaming media and handle emergency calls.

### Smart Platform

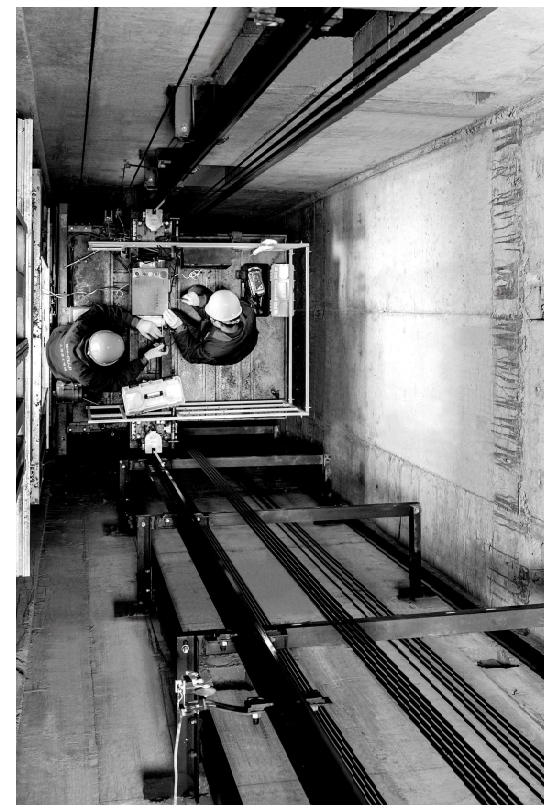
It adopts big data analysis and artificial intelligence technologies to analyze all elevator information so it can give an early warning for maintenance work and remind maintenance personnel of maintenance work when problems occur or the service life has expired.

### Smart Internet

Intelligent cube, the various terminal devices can access the IoT system information to facilitate the use and maintenance of elevators much more.

Optional

## Put Clients First, Service Is Life



### Five-star Service Team

The five-star service team of SHANGHAI FUJI ELEVATOR has outstanding technical skills and high-level service ability and provides efficient comfortable excellent experiences for users.

### An after-sales service network Covering the whole China

SHANGHAI FUJI ELEVATOR has set up branches in all major cities in China to respond in the first place and quickly provide spare parts for local customers.

### Distribution network across the globe

SHANGHAI FUJI ELEVATOR has set up distributor networks in many countries and regions across the globe with products and services serving many iconic buildings.

