

HERITAGE QUALITY ESCALATOR

Shanghai Fuji

Elevator & Escalator
since 1992



SHANGHAI FUJI ELEVATOR CO., LTD.

No. 7505-7515 Daye Highway, Fengxian District, Shanghai, China

EXPORT PLATFORM

Shanghai Fuji Ritzer International Trade Co., Ltd.

Export Email: export-shfuji@163.com

Export Tel: +862157559736

export@shanghai-fuji.com

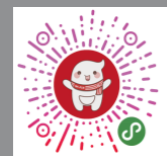
Website: www.shanghai-fuji.com

FEC SERIES ESCALATOR

FRG SERIES MOVING WALK



Wechat



Applet



Website



Facebook



SHANGHAI FUJI ELEVATOR



SHANGHAI FUJI

ESCALATOR & MOVING WALK

Safe and Reliable, Highly Efficient and Energy Saving

Beautiful and Elegant, Humanized and Considerate

Smooth and Comfortable, Sturdy and Durable

Every day, we continue to strive,

Exploring the limits of excellence beyond performance.

Heritage is the continuation of craftsmanship, dedication, and fine products.

Innovation, solely aimed at creating a more elegant and secure life.

Shanghai Fuji Elevator escalators & moving walks, crafted with sincerity,

Forge the highest standard of perfection in this era—both refined inside and out.

CONTENTS

About US	P01
----------	-----

Function Characteristics	P04
--------------------------	-----

Standard Configuration	P09
------------------------	-----

Optional Configuration	P11
------------------------	-----

Safety Devices	P13
----------------	-----

Layout Drawing	P15
----------------	-----

Arrangement Plan	P21
------------------	-----

Specification Table	P22
---------------------	-----

List of Configuration Specification	P23
-------------------------------------	-----

Civil Construction Requirements	P25
---------------------------------	-----

Put Clients First	P27
-------------------	-----

About Us



Established in 1992, SHANGHAI FUJI ELEVATOR is pioneer, practitioner and innovator of China elevator industry. We are one of the earliest forerunners of Chinese national elevator brands, owning A-class qualification in manufacturing, installation, modernization and maintenance. Focusing on elevator industry for nearly 30 years, we are dedicated to provide safe, high-quality, and trustworthy elevator, escalator and moving walk to customers worldwide.

- Founded in Shanghai in 1992, one of the earliest Chinese elevator companies
- In 1992, the 1st Chinese elevator company to introduce Japanese Fuji VVVF technology to China
- Member of Shanghai Elevator Trade Association
- Member of China Elevator Association
- China Top 15 Elevator Company
- In 2002, built one of the earliest elevator test towers in China with 76m height
- IS9001, ISO14001 and ISO45001 certified company
- EN81-20 & 50 Certified Products
- Among the first Chinese elevator brands entering the supplier list of China government procurement elevator
- The best service brand for China government procurement elevator
- Ranked 31th among Top 50 Brand Value of China Machinery Manufactures
- Shanghai Famous Brand, Shanghai High-Tech Enterprise, and Shanghai 5 Star Integrity Enterprise
- Launched brand ambassador "An-an"
- Established Shanghai's first elevator safety science popularization practice base

Certificates



CERTIFICATE OF CONFORMITY FULLNESS EXAMINATION OF TECHNICAL FILE

Certificate No.
10.16.2714

Date of Issue
03/04/2025

Valid From
03/04/2025

The Certificate is valid until
02/04/2030

Applicant (Name & Address)	Shanghai Fuji Elevator Co., Ltd. NO. 7505-7515, Daye Road, Fengxian District, Shanghai City, P.R. China
Manufacturer (Name & Address)	Same as applicant
TCF No.	VC-LY-2025032501
Product Description	Escalator
Model(s)	FEC series (See Annex for details) Annex I: Technical Descriptions Annex II: Main Components List
Directive(s)	Machinery Directive 2006/42/EC
Standard(s)	EN 115-1:2017, EN 60204-1:2018, EN ISO 12100:2010

This is to certify that, upon the relevant application of the above-mentioned applicant, EUROCERT as Third-Party Authority has reviewed the Technical Construction File of the described product, which found to fulfill the basic health and safety prerequisites of above-mentioned Directive(s).

- Note:**
- The manufacturer should issue a Declaration of Conformity according to the basic requirements of the applicable standards and relevant directives.
 - The CE marking can be affixed on the above-mentioned product with the manufacturer's responsibility, if all relevant and applicable directives are complied with.
 - All modifications to the Technical File should be first submitted to the Third-Party Inspection Authority to ensure further validity of this attestation
 - This certificate is valid only for the product and configuration described and in conjunction with the technical data detailed above.



Check the validity of the Certificate by scanning the QR code at right.
EUROCERT S.A. 89 Chlois & Lykovriseos str., 144 52, Metamorphosi – Greece
T +30 210 62.52.495, +30 210 62.53.927, F +30 210 62.03.018, M info@eurocert.gr



Exquisite Quality, Perfect Legacy

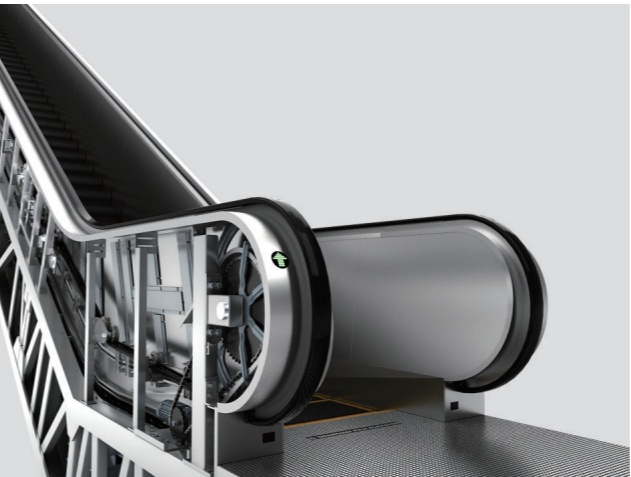
Shanghai Fuji FEC series escalators and FRG series moving walks are designed based on the EN115 standard and the stringent standards of various countries worldwide. They adhere to a human-centered, lean production and manufacturing philosophy. By incorporating advanced microcomputer control systems and innovative materials, these products thoroughly meet customer demands in terms of safety, aesthetics, and performance. They provide users with a comfortable, smooth, safe, and reassuring ride experience. Shanghai Fuji escalators and moving walks are meticulously crafted, refining every detail to ensure outstanding and reliable quality. They can meet the diverse requirements of various environments, making them widely applicable in public spaces such as commercial plazas, hotels, subways, train stations, airports, overpasses, and office buildings.



M-type (slim type)



L-type (ordinary)



G-type (public transit)

Lean Manufacturing, Robust and Durable

Shanghai Fuji Elevator infuses the spirit of Shanghai’s industrial excellence and relentless pursuit of perfection into its escalators and moving walks. Only materials that meet the stringent quality standards of Shanghai Fuji Elevator are allowed into production. Through meticulous and detailed intelligent manufacturing processes, rigorous quality standards and optimized design seamlessly blend together, ensuring that every product is crafted to perfection and is fully worthy of the trust of our users.



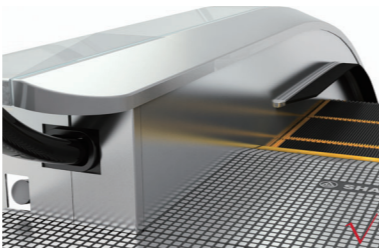
Large positioning gantry tooling

Advanced & Intelligent Production Process

The entire production process utilizes an advanced intelligent gantry tooling production and assembly line, ensuring precise craftsmanship and stable quality. With rigorous process and production line management, we further enhance the safety performance of the escalators and moving walks.



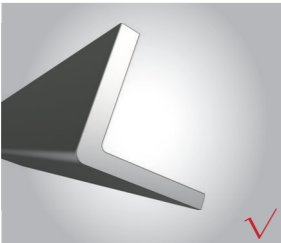
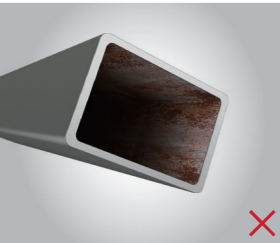
Main and Auxiliary Rollers with a Larger Diameter



Skirt Panel and Inner/Outer Decking Panel

Key Parts with High Level Performance

The use of large-diameter polyurethane main and auxiliary wheels ensures smoother operation, lower noise, and a longer service life. The skirting panel and inner/outer decking panel are made of high-strength stainless steel, offering greater durability and a more luxurious and impressive appearance.

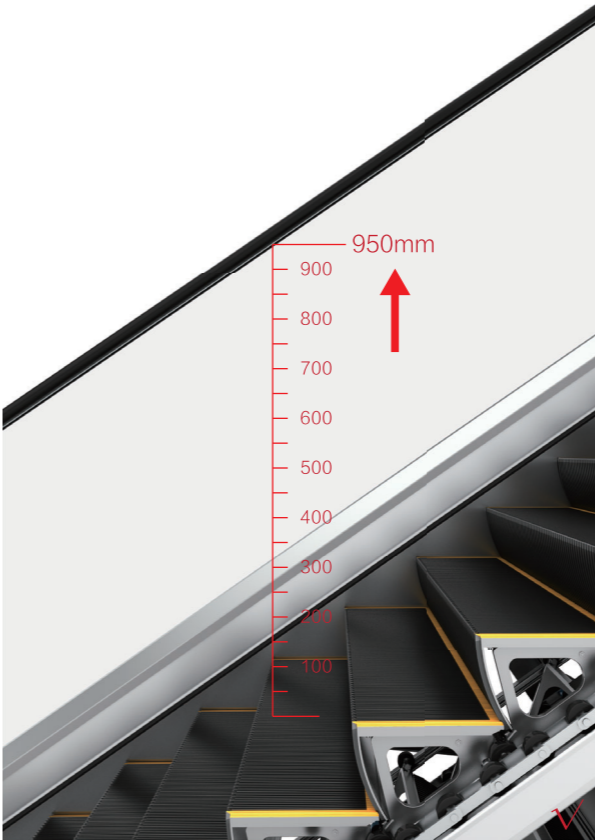


Reliable Gearless PMS Motor

The variable frequency closed-loop control technology with high precision and high reliability is adopted, a 32-bit DSP processor with more powerful in both controllability and operation is used; the control MCU and drive DSP monitor and control each other in the way of communication protocol so as to guarantee that the procedure can run reliably all the time. With the synchronous belt drive, the variable frequency motor can directly drive the car door, make

Optimized Design, Safe and Reliable

Only safety that stands the test of time can be considered the legacy-level quality of an elevator. Every small change at Shanghai Fuji Elevator is a significant responsibility towards our passengers. From the moment you step onto a Shanghai Fuji escalator or moving walk, safety, comfort, and reliability are with you every step of the way.



High Safety Standard Handrail

The standard configuration of the handrail has been raised by 50mm compared to the traditional model, reaching 950mm for enhanced safety and peace of mind. The innovative design features a curved surface handrail entry, with a smooth and full appearance that better fits the ergonomic curves of the human body.

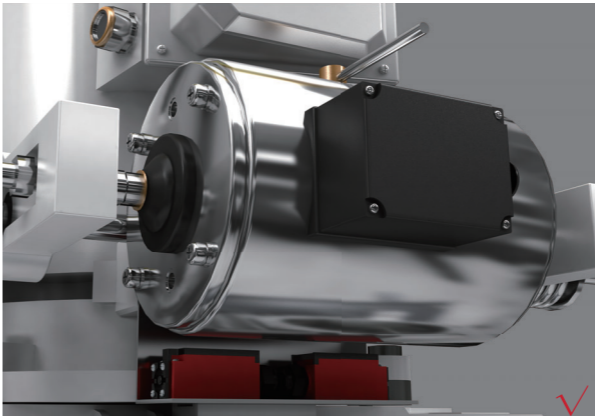
Visual Warning Components

Optional components such as traffic signal lights, skirt panel lighting, yellow comb teeth, and step boundary lines provide highly visible elements that serve as effective warnings, guiding passengers to use the escalator safely.



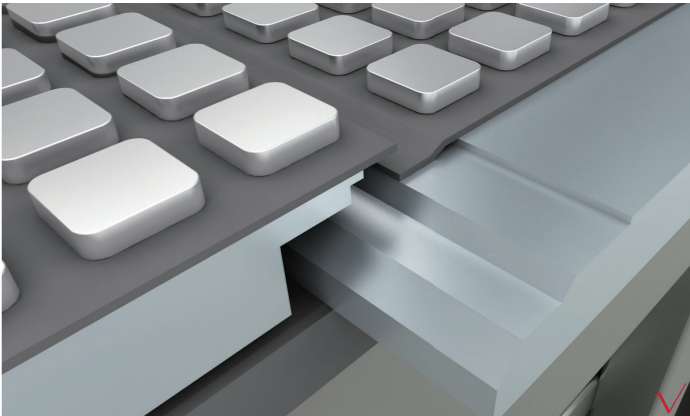
Reliable Band-type Middle Service Brake

Motor adopts band-type brake in the middle achieving excellent braking effect, improving safety.



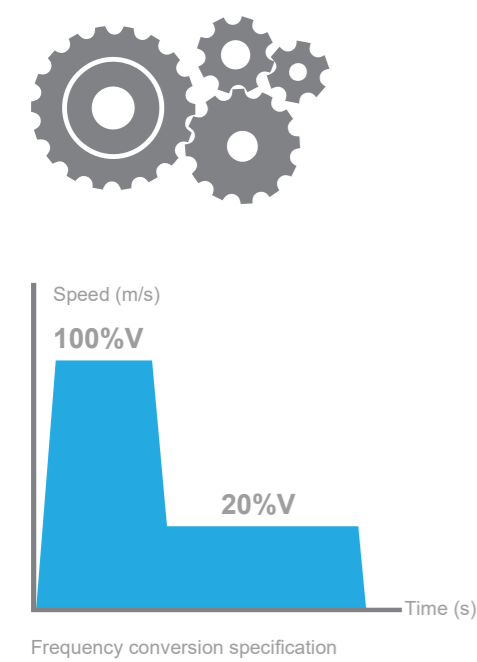
Double-layered Overlap High-safety Floor Plates

The specially designed double-layered overlap floor plates feature safety redundancy. The plates are securely placed on both sides of the high-strength bed frame, ensuring a tight and firm overlap.



Intelligent and Highly-efficient

Shanghai Fuji Elevator has always focused on the field of green energy conservation, breaking conventional designs. By adopting energy-efficient drive systems, optional energy-saving control systems, environmentally friendly LED lighting, and automatic energy-saving operation controls, it creates a new energy-saving performance, bringing a green living revolution to escalators and moving walkways.



Highly Efficient Drive System (Standard)

Compared with traditional ceaseless system, SHANGHAI FUJI ELEVATOR adopts a newly designed high-efficiency and energy-saving new drive system with low vibration, low noise and high efficiency, improving efficiency by 23%.



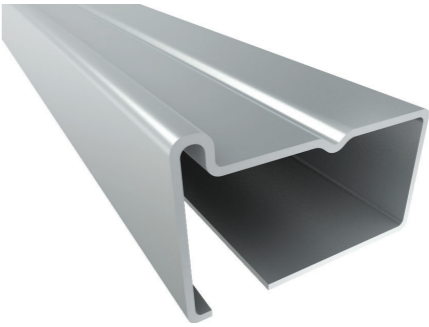
Intelligent Bypass Frequency Conversion Technology (Optional)

Escalator starts with Y-Δ and operates in Y collection to save energy when inspecting empty load within setting time; when microwave diffuse reflection device examines that there is passenger, control system makes auto-induction and switches to Y-Δ.mode for operation to provide sufficient output torque, realizing normal work of system. The energy system can save electric power by 30%, at the meantime improve service life of equipment, reduce operation cost. Even when there is malfunction arising in energy system, escalator can operate normally in the way of Y-Δ.

Energy Saving and Environment Friendly

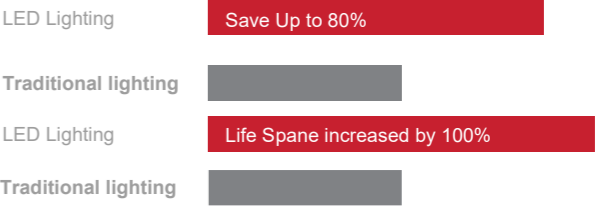
Main Rail with Oil Trap (Optional)

The optional main rail system with guide in sides, oil trap and thickness being 3mm, which prevents leakage of grease at the meantime when realizing highly precise horizontal positioning



Green LED Lighting (Optional)

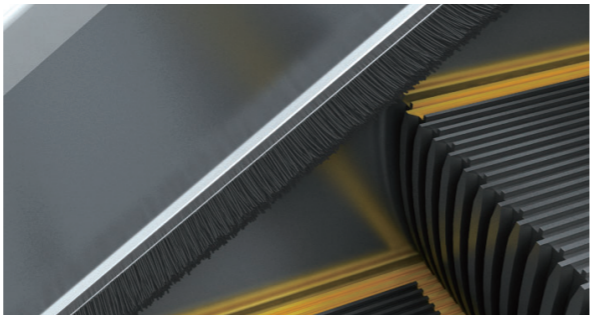
A variety of green and environmentally friendly LED lighting solutions are available for selection. Compared to traditional lighting, they can save up to 80% in energy consumption and double the lifespan.



Standard Configuration

Anti-pinch Device (for Escalator)

Installed on both sides of the skirt panel and located above the steps, the anti-pinch device can prevent passengers' shoes, clothing, etc., from directly rubbing against the skirt panel. It safely and effectively prevents foreign objects from being dragged into the steps, thereby avoiding potential hazards.

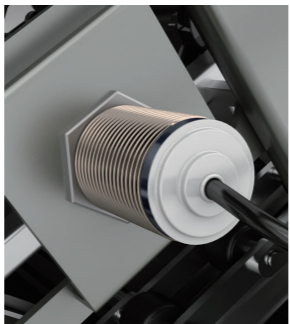


Streamlined Handrail Entrance

The innovative, unique, elegant, and dynamic modern streamlined handrail entrance and exit design endows escalators and moving walks with spirit and approachability, enhancing their aesthetic appeal and highlighting the nobility and grandeur of the accompanying buildings.

Step/Pedal Missing Protection Device

High-sensitivity sensors are installed at the step rotation area of the escalator and the pedal rotation area of the moving walk. When a step or pedal is missing, the escalator or moving walk will automatically stop operating.



Protection device for step missing



Protection device for pedal missing



High-efficiency Energy-saving Vertical Traction Machine

It features smooth meshing and reduced friction, ensuring exceptionally low noise (reducing noise by more than 60%). Compared to traditional worm gear drive systems, it offers greater driving efficiency and lower energy consumption (saving more than 20% in energy).

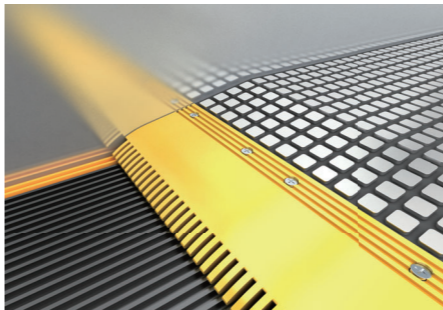
Standard Configuration

Handrail



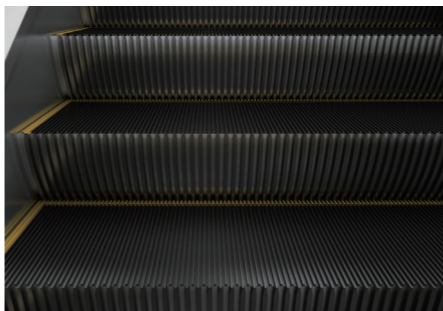
Black

Comb Teeth



Yellow Resin

Handrail



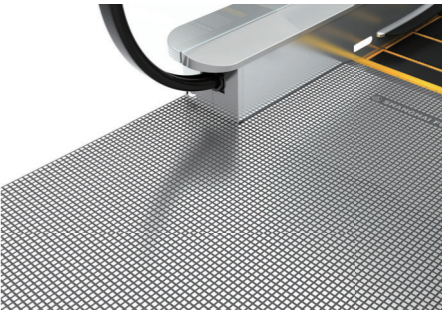
Black stainless steel (Standard for indoor escalator)



Silver grey aluminum alloy (Standard for outdoor escalator & moving walk)

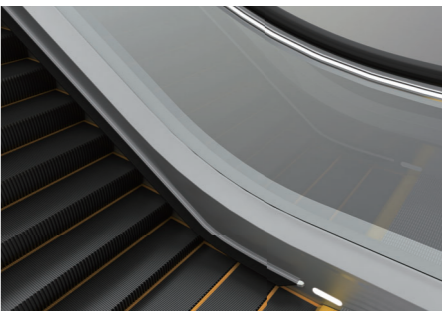
Note: All parameters, options, and colors are subject to change. The components and options displayed in this catalog are for reference only. The colors in the printed materials may vary slightly from the actual products. Please refer to actual products.

Comb Plate & Floor Plate

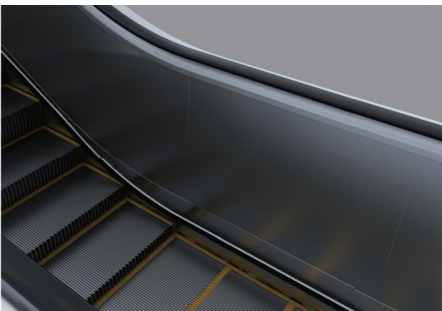


Stainless steel

Balustrade Panel



Safety glass colorless (Standard for vertical handrail)

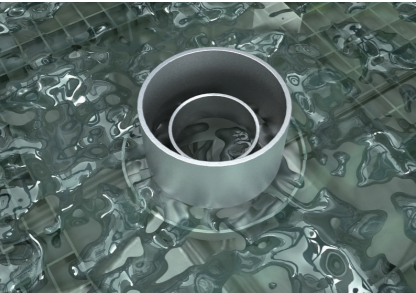
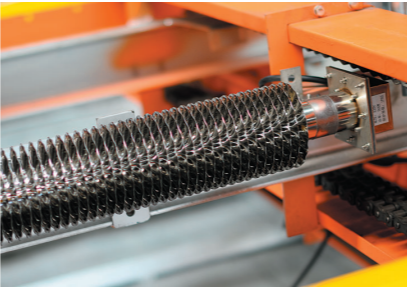


Stainless steel (Standard for inclined handrail)

Optional Configuration

Heating Device (Applicable to Outdoor Escalator)

When using the escalator in extreme low-temperature outdoor conditions, intelligent heating systems can be optionally installed in the upper machine room, middle escalator, and lower machine room. The heating system is automatically managed by a temperature control system, providing intelligent regulation for heating the escalator, comb plates, and machine rooms, without the need for manual intervention. The system operates efficiently and energy-saving.



Oil Water Separator (Applicable to Outdoor Escalator)

The escalator separates oil and water, with rainwater filtered through an oil-water separator before being discharged. Oil and grease are regularly cleaned. This system mainly serves an environmental protection purpose.

Step Gap Light

Bright green LED lights are installed at the top and bottom entrances of the escalator, as well as beneath the steps and pedals. When the escalator or moving walk is in operation, the green fluorescence shines through the gaps between the steps and pedals, helping passengers identify the position and improving riding safety.

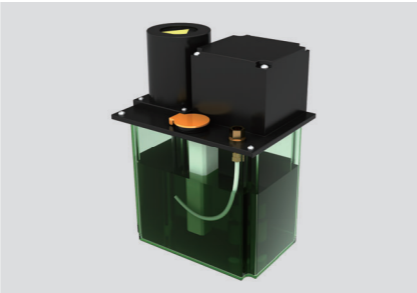


LED Handrail Lighting

LED light strips powered by safe voltage are installed beneath the handrail. These lights have a long lifespan, high brightness, accurate color rendering, and are more energy-efficient. They not only enhance the aesthetic appeal of the escalator but also improve passenger safety during boarding and alighting.

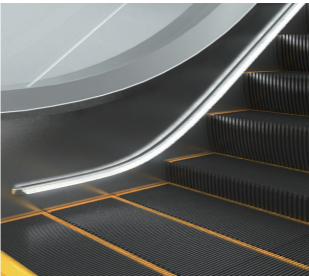
Automatic Lubrication System

The intelligent control automatic lubrication system ensures low noise and low vibration during the operation of the chain rollers, extending their lifespan. It also significantly reduces maintenance labor costs.

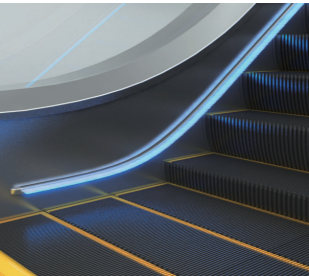


Optional Configuration

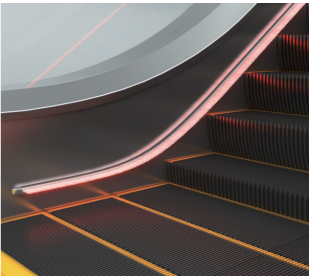
Skirting Panel Lighting



White

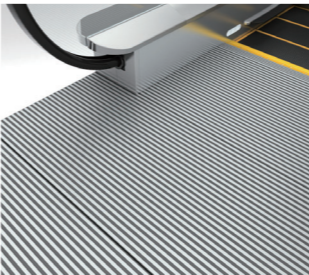


Blue



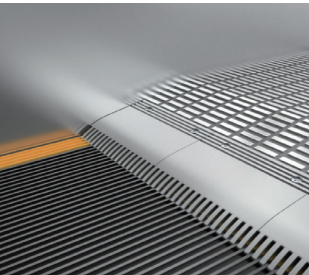
Red

Comb plate, floor plate



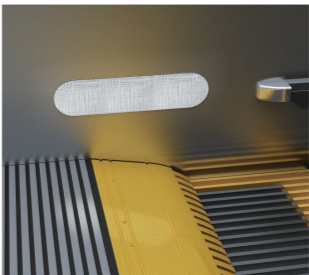
Aluminum

Comb Teeth

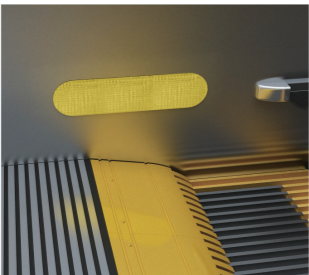


Aluminum

Comb teeth lighting

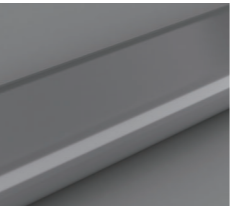


White LED

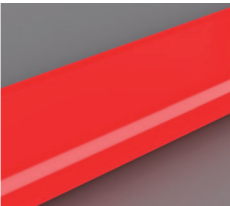


Yellow LED

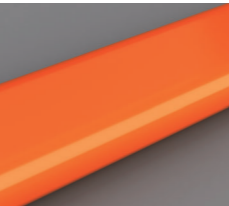
Handrail Color



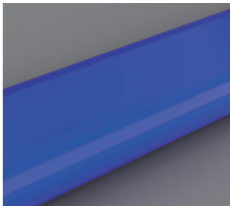
Gray HR-01



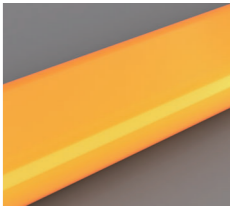
Red HR-02



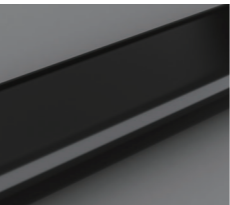
Orange HR-03



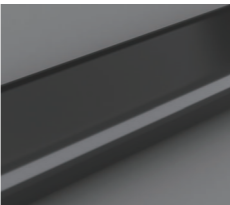
Blue HR-04



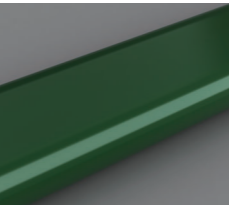
Yellow HR-05



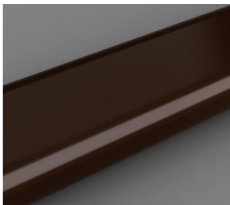
Carbon black HR-06



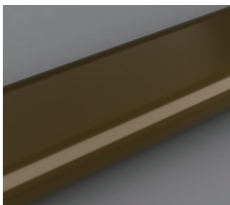
Dark gray HR-07



Green HR-08



Brown HR-09



Brown HR-10

Safety Devices

Shanghai Fuji Escalator's safety devices not only comply with the EN115 European standard, but also offer many safety options that exceed European standards, providing further assurance for the safe transportation of you and your users.

- 1

Phase loss (phase failure, phase reversal) protection
- 2

Motor overload protection device
- 3

Electrical loop protection device
- 4

Protection device in entrance of handrail
- 5

Safety device for comb plate
- 6

Protection device for step collapse
- 7

Detector f or stair missing
- 8

Protection device for chain scission of main drive chain
- 9

Safety protection device for step chain
- 10

Overspeed protection device

11

Protection device for reversal direction

12

Service brake

13

Affiliated brake (When H >6000)

14

Emergency stop button

15

Skirt panel protection device

16

Electrostatic protection device for steps

17

Detector for brake releasing

18

Stop button in control cabinet

19

Handrail belt speed detector

20

Anti-pinch device (skirt panel brush)

- 21

Maintenance floor cover plate open detection
- 22

Braking distance detection
- 23

Handrail static protection device
- 24

Starting buzzer alarm
- 25

Water level switch (outdoor type)
- 26

Fault display on the upper control screen
- 27

Upper and lower machine room protective cover
- 28

Double rows of chain
- 29

Yellow warning line
- 30

Step gap lighting

31

Comb lighting

32

External operating direction indicator

33

Handrail anti-climbing device

34

Automatic lubrication

35

Step up-rush safety protection device

36

Handrail belt broken protection device

37

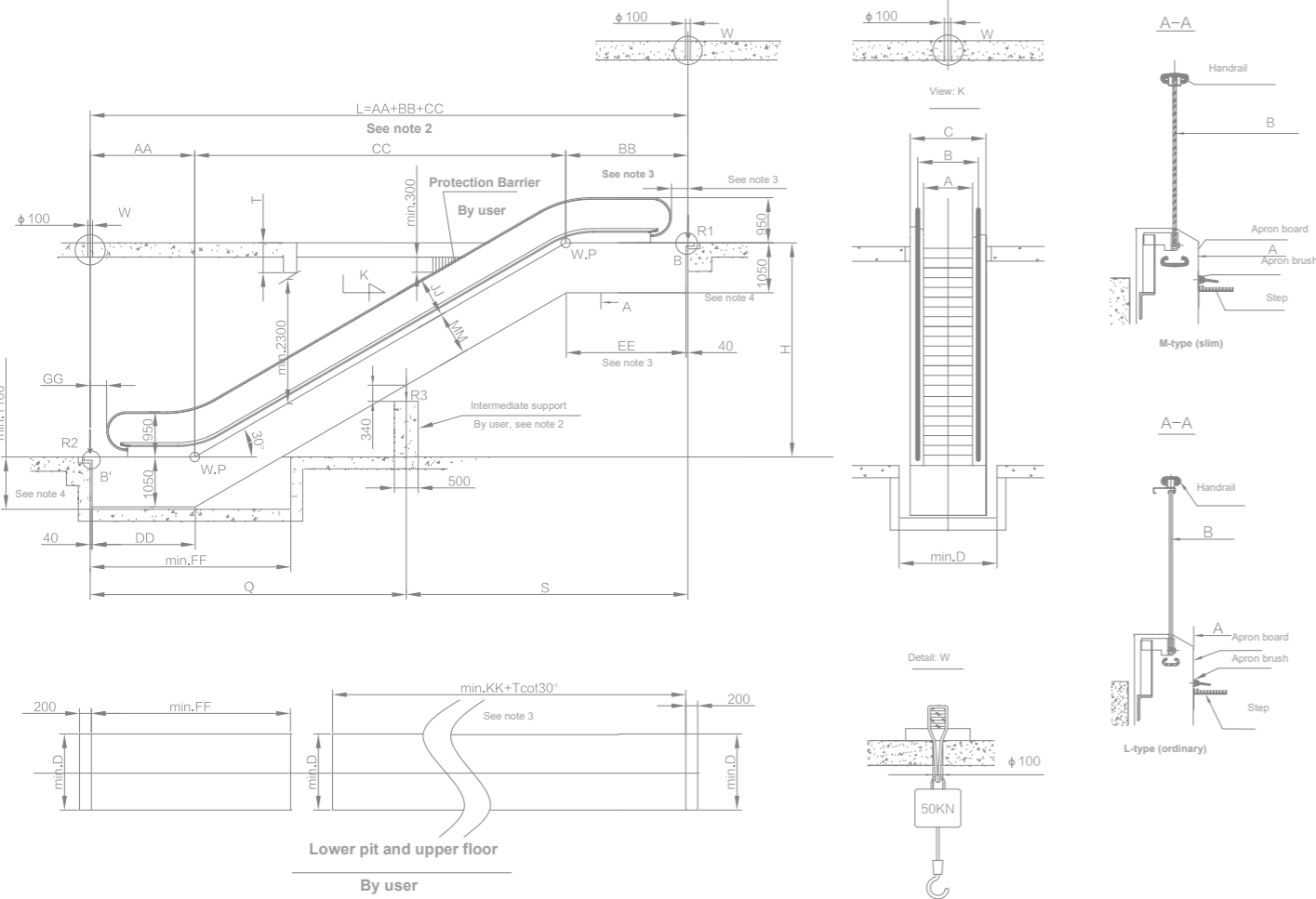
Inspection lock

● Standard

■ Optional



Layout Drawing for 30° M-type (Slim) & L-type (Ordinary) FEC Escalators (H≤9500)



A	600	800	1000
B	838	1038	1238
C	1150	1350	1550
D	1250	1450	1650
F	15500	15000	15000

Note: 1. The escalator meets the standard of EN115.

2. When L>F, an intermediate support should be provided.

3. If the step width A=600, the depth of the upper horizontal truss should increase by 500mm.

4. Specifications of the Outdoor Type: the depth of the upper horizontal section of the truss is 1,100mm; the depth of the bottom pit is 1,150mm.

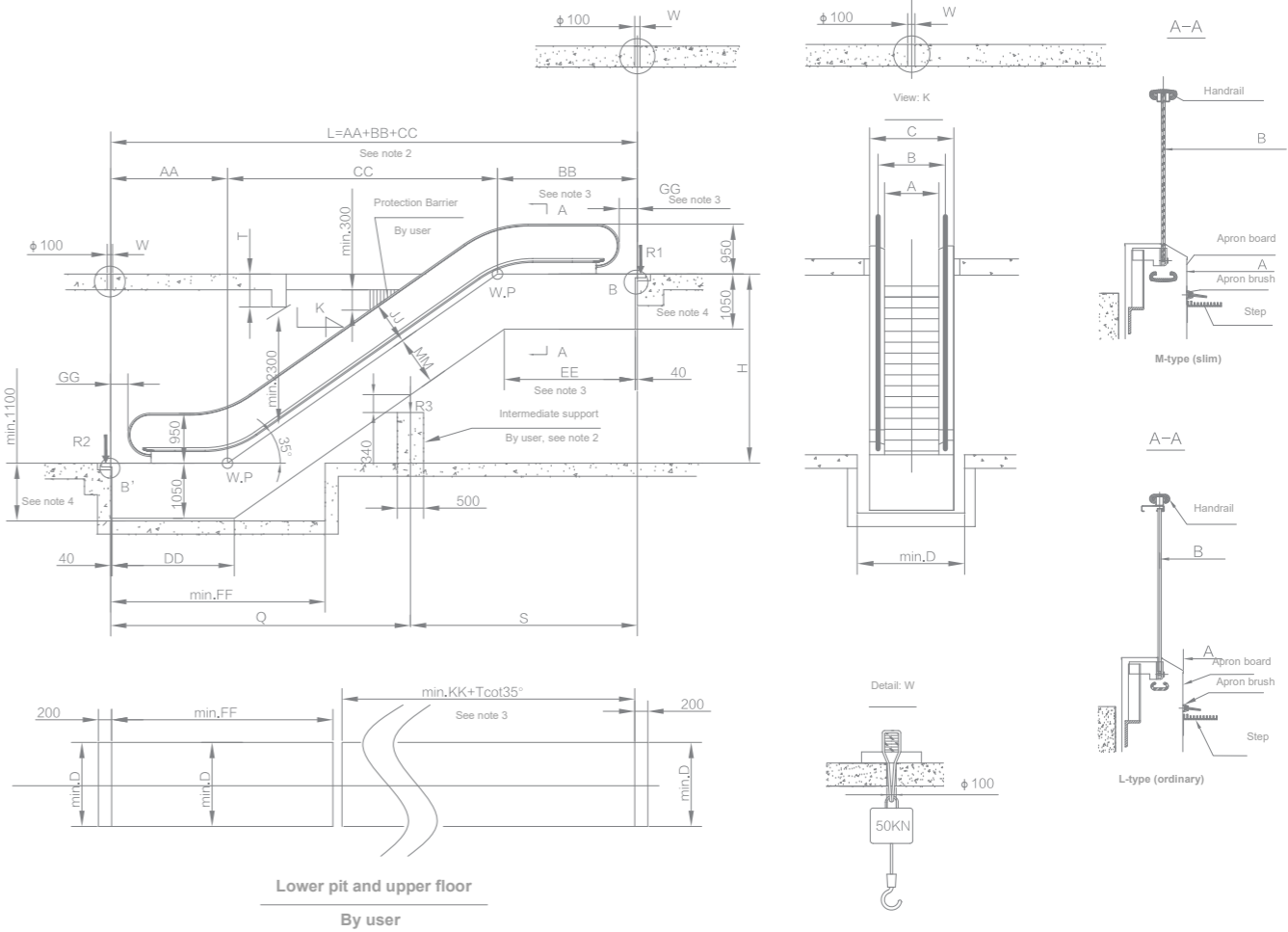
Supporting force

A		R1	R2	R3
1000	L≤F	4.97L+12.92~15.09/L	4.97L+3.55+15.09/L	
	L>F	4.97S+12.92~21.03/S	4.97Q+3.55~5.94/Q	4.97(S+Q)+21.03/S+5.94/Q
800	L≤F	4.31L+12.50~15.02/L	4.31L+3.19+15.02/L	
	L>F	4.31S+12.50~20.35/S	4.31Q+3.19~5.34/Q	4.31(S+Q)+20.35/S+5.34/Q
600	L≤F	3.66L+12.09~14.97/L	3.66L+2.83+14.97/L	
	L>F	3.66S+12.09~19.07/S	3.66Q+2.83~4.74/Q	3.66(S+Q)+19.70/S+4.74/Q

Note: The units of L, Q and S in the calculation formula are in meters

Specifications	AA	BB	CC	DD	EE	FF	GG	JJ	KK	MM	H	Horizontal step
M & L	2197	2568	H x 1.732	2168	2517	4250	505	850	6555	915	H ≤ 6000	2
M & L	2597	2968	H x 1.732	2568	2917	4650	505	850	6955	915	H ≤ 9500	3

Layout Drawing for 35° M-type (Slim) & L-type (Ordinary) FEC Escalators (H≤6000)



A	600	800	1000
B	838	1038	1238
C	1150	1350	1550
D	1250	1450	1650
F	15500	15000	15000

Note: 1. The escalator meets the standard of EN115.

2. When L>F, an intermediate support should be provided.

3. If the step width A=600, the depth of the upper horizontal truss should increase by 500mm.

4. Specifications of the Outdoor Type: the depth of the upper horizontal section of the truss is 1,100mm; the depth of the bottom pit is 1,150mm.

Supporting force

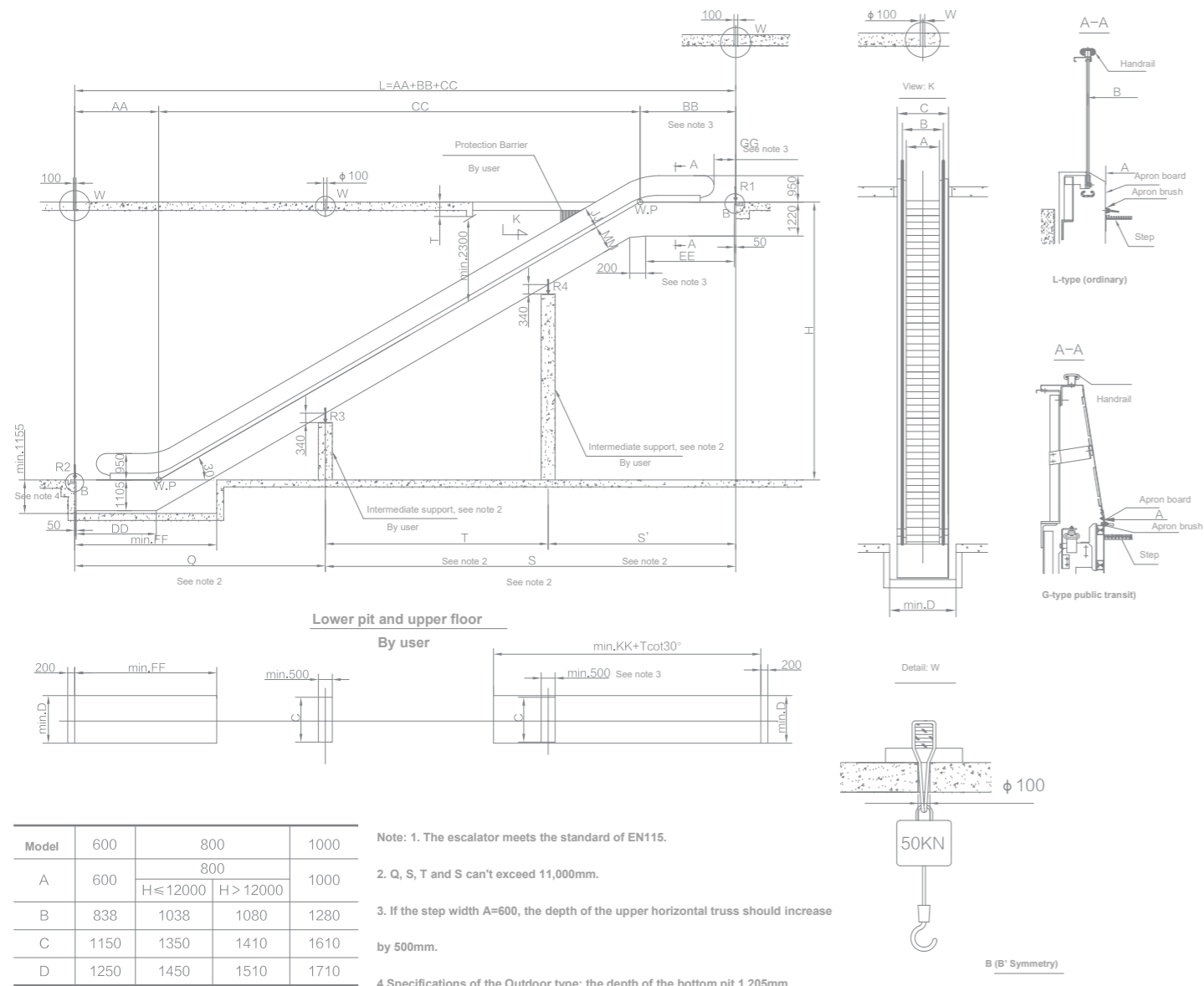
A		R1	R2	R3
1000	L≤F	5.08L+12.51~15.60/L	5.08L+2.74+15.60/L	
	L>F	5.08S+12.51~20.25/S	5.08Q+2.74~4.65/Q	5.08(S+Q)+20.25/S+4.65/Q
800	L≤F	4.40L+12.15~15.51/L	4.40L+2.47+15.51/L	
	L>F	4.40S+12.15~19.70/S	4.40Q+2.47~4.19/Q	4.40(S+Q)+19.70/S+4.19/Q
600	L≤F	3.75L+11.63~15.60/L	3.75L+2.10+15.29/L	
	L>F	3.75S+11.63~18.85/S	3.75Q+2.10~3.56/Q	3.75(S+Q)+18.85/S+3.56/Q

Note: The units of L, Q and S in the calculation formula are in meters

Specifications	AA	BB	CC	DD	EE	FF	GG	JJ	KK	MM	H	Horizontal step
M & L	2241	2664	H x 1.428	2332	2493	4100	505	830	5950	935	H ≤ 6000	2

Layout Drawing for 30° L-type (Slim) & G-type (Public Transit)

FEC Escalators (9500 < H≤14000)



Supporting force

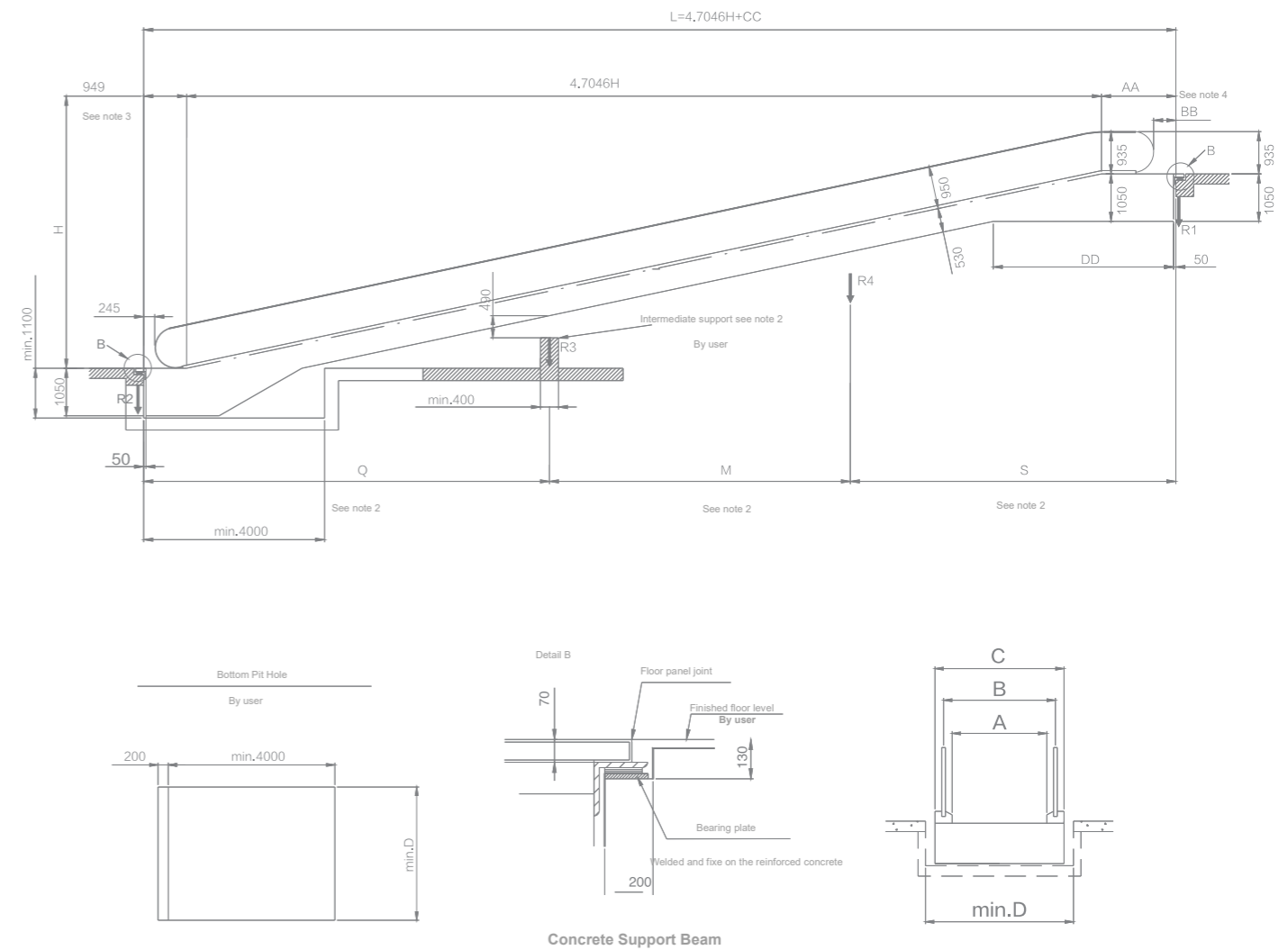
A	Intermediate support	R1	R2	R3	R4
1000	1	5.81S+20.52–32.69/S	5.81Q+7.39–14.63/Q	5.81(S+Q)+32.69/S+14.63/Q	
	2	5.81S' +20.52–32.69/S'	5.81Q+7.39–14.63/Q	5.81(Q+T)+14.63/Q	5.81(S' +T)+32.69/S'
800	1	5.11S+15.22–27.11/S	5.11Q+6.94–13.76/Q	5.11(S+Q)+27.11/S+13.76/Q	
	2	5.11S' +15.22–27.11/S'	5.11Q+6.94–13.76/Q	5.11(Q+T)+13.76/Q	5.11(S' +T)+27.11/S'
600	1	4.42S+15.28–27.87/S	4.42Q+6.50–12.88/Q	4.42(S+Q)+27.87/S+12.88/Q	
	2	4.42S' +15.28–27.87/S'	4.42Q+6.50–12.88/Q	4.42(Q+T)+12.88/Q	4.42(S' +T)+27.87/S'

Note: The units of Q, S, T and S' in the calculation formula are in meters

If you require more than two intermediate supports for the trunk, please

Spec.	AA	BB	CC	DD	EE	FF	GG	JJ	KK	MM	H	Horizontal step
L	3015	3435	H x 1.732	2881	3185	5100	770	850	8100	915	9500 < H ≤ 14000	3
G							837					

Layout Drawing for S800-type and S1000-type Inclined FRG Moving Walks (Handrail: M, L and G Types)



Note: 1. If $L > 13000$, an intermediate support should be provided.

2. S, Q≤13000mm, M≤10000mm.

3. The maximum size of H is 9,000mm

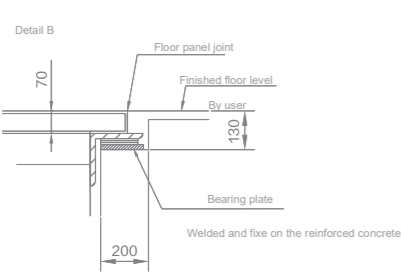
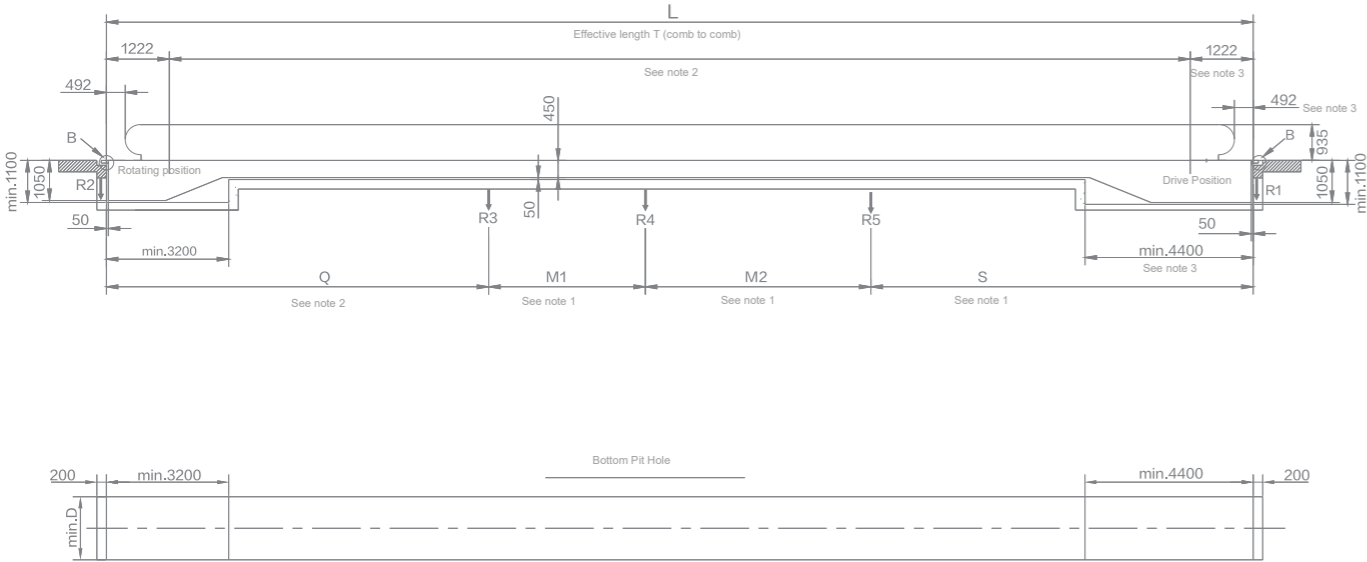
4. When a frequency inverter is used, the length of the upper trunk should increase by 300mm

Supporting force

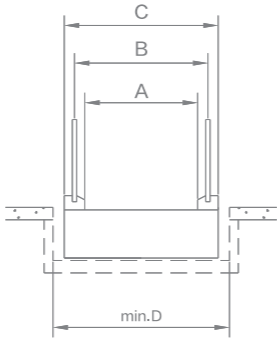
Specifications	Intermediate Support	R1	R2	R3	R4
S800	0	4.04L+14.14~14.94/L	4.04L+4.18+14.94/L	—————	—————
	1	4.04S+14.14~20.08/S	4.04Q+4.18~5.14/Q	4.04(S+Q)+20.08/S+5.14/Q	—————
	2			4.04(Q+M)+5.14/Q	4.04(S+M)+20.08/S
S1000	0	4.67L+14.59~15.07/L	4.67L+4.60+15.07/L	—————	—————
	1	4.67S+14.59~20.72/S	4.67S+4.60~5.66/Q	4.67(S+Q)+20.72/S+5.66/Q	—————
	2			4.67(Q+M)+5.66/Q	4.67(S+M)+20.72/S

Note: The units of L, Q and M in the calculation formula are in meters

Layout Drawing for S1000-type Horizontal
FRG Moving Walk (Handrail: M, L and G Types)



Concrete support beam



Specifications	S1000
A	1000
B	1238
C	1550
D	1650

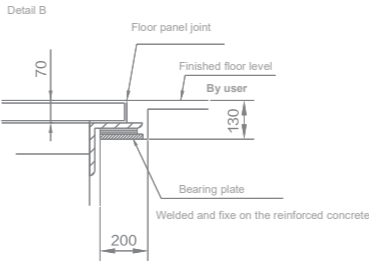
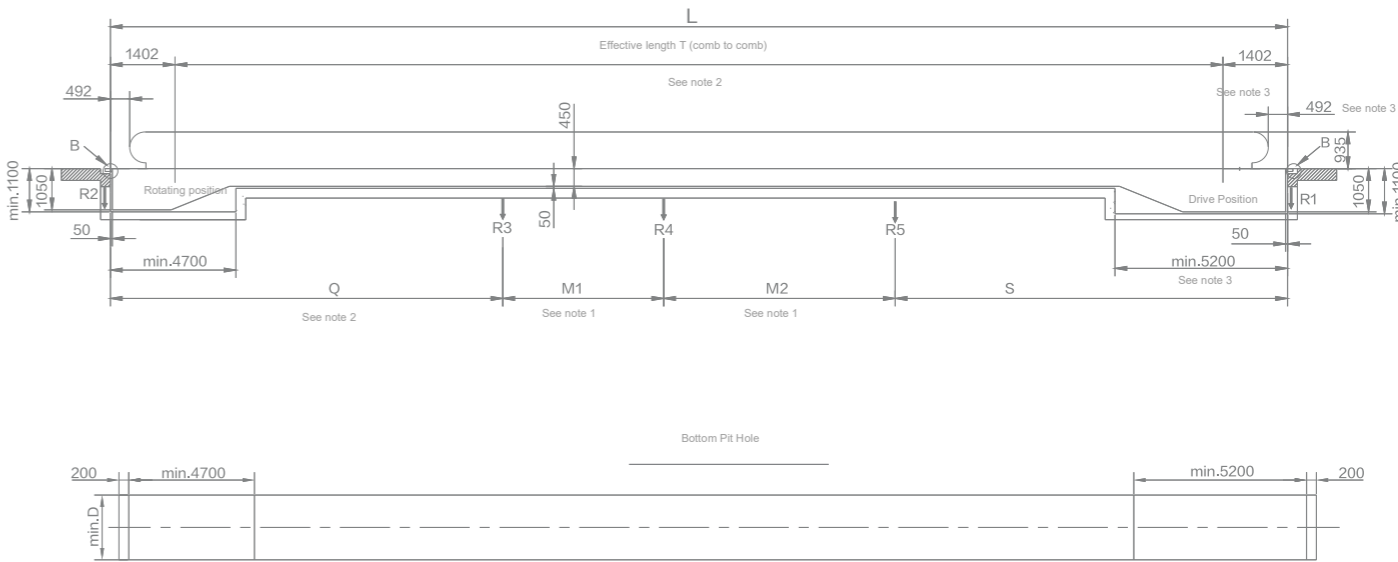
- Note: 1. The maximum size of Q, S, M1 and M2 is 10m.
2. The maximum size of T is 30m (M Type) and 100m (L and G Types).
3. When a frequency inverter is used, the length of the truss at the drive position should increase by 300mm.

Supporting force

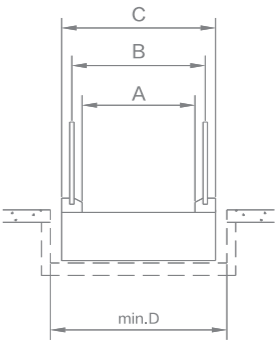
Specifications	Intermediate Support	R1	R2	R3	R4	R5
S1000	1	4.71S+14.92–22.55/S	4.71Q+6.56–8.56/Q	4.71(S+Q)+22.55/S+8.65/Q	—————	—————
	2			4.71(Q+M1)+8.65/Q	4.71(S+M1)+22.55/S	—————
	3				4.71(M1+M2)	4.71(S+M2)+22.55/S

Note: The units of Q, S, M1 and M2 in the calculation formula are in meters

Layout Drawing for S1400-type Horizontal
FRG Moving Walk (Handrail: M, L and G Types)



Concrete support beam



Specifications	S1400
A	1400
B	1638
C	1950
D	2050

- Note: 1. The maximum size of Q, S, M1 and M2 is 9m
- 2.The maximum size of T is 30m (M Type) and 100m (L and G Types).
3. When a frequency inverter is used, the length of the truss at the drive position should increase by 300mm

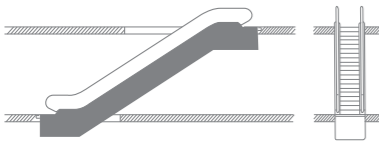
Supporting force

Specifications	Intermediate Support	R1	R2	R3	R4	R5
S1000	1	6.34S+18.47–29.51/S	6.34Q+7.90–14.03/Q	6.34(S+Q)+29.51/S+14.03/Q	—————	—————
	2			6.34(Q+M1)+14.03/Q	6.34(S+M1)+29.51/S	—————
	3				6.34(M1+M2)	6.34(S+M2)+29.51/S

Note: The units of Q, S, M1 and M2 in the calculation formula are in meters

Arrangement of Escalator & Moving Walk

Note: The following is an example of escalators. The layout of the moving walks can be handled by referring to the following scheme.

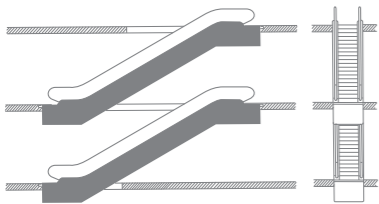
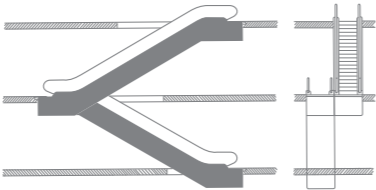


Single unit

A single escalator connects two levels. It is suitable for buildings where the passenger flow mainly moves in one direction. It can be adjusted flexibly to meet the needs of passenger movement (e.g., ascending in the morning, descending in the evening).

Continuous arrangement (one-way traffic)

This layout is mainly used for small department stores with three consecutive sales floors. It requires slightly more space compared to the intermittent layout.

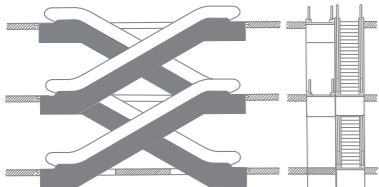
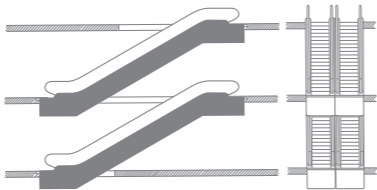


Interrupted arrangement (one-way traffic)

This layout may cause some inconvenience to passengers, but it benefits mall owners, as the space between the up or down escalators and the transfer escalators can allow customers to view specially arranged advertising displays.

Parallel, interrupted arrangement (two-way traffic)

This layout is mainly used in shopping malls and public transportation facilities with high passenger traffic. When there are three or more escalators, the direction of movement can be adjusted according to passenger flow. This layout is more economical, as it eliminates the need for inner guard panels.



Crisscross, continuous arrangement (two-way traffic)

This layout is primarily used in large department stores, public buildings, and public transportation areas, where the number of trips between floors should be kept to a minimum.

Specification Table

S Standard

O Optional

Escalator

Handrail system				
Handrail	Synthetic rubber (Black)			S
	Synthetic rubber/ Polyurethane (10 colors)			O
Handrail Support		Hairline Stainless Steel		S
Inner & outer decking panel (only				
M/L type)				
Balustrade	M/L Types: Colorless Transparent Tempered Glass			S
	G Type: Hairline Stainless Steel			S
Skirt panel	Hairline Stainless Steel			S
Step				
Step	Indoor: stainless steel (black) with yellow plastic Demarcation Line			S
	Outdoor: aluminum alloy (grey) with a yellow paint demarcation line			S
	Aluminum Alloy Die-casting (Grey/ Black)			O
Demarcation Line		Paint (Yellow)		S
		Synthetic Rubber (Yellow)		O
Floor plate				
Comb Plate	Yellow Synthetic Rubber			S
	Aluminum Alloy Die-casting			O
Floor Plate	Hairline Stainless Steel			S
	Aluminum Alloy			O
Item		S600	S800	S1000
Step Width (mm)		600	800	1000
Maximum Lifting Height (m)		30°: 12.72		
		35°: M, L, G Type 6.0		
Angle of Inclination (Degree)		30°/35°		
Rated Speed (m/s)		0.65/0.5		
Maximum transport capacity (person/ hour)		3600	4800	6000
Power Supply		Three-Phase and Five-Wire 380V 50HZ		
		Single Phase 220V 50HZ		

Moving Walk

Handrail system				
Handrail	Synthetic rubber (Black)			S
	Synthetic rubber/ Polyurethane (10 colors)			O
Handrail Support		Hairline Stainless Steel		S
Inner & outer decking panel (only M/L type)				
Balustrade	M/L Types: Colorless Transparent Tempered Glass			S
	G Type: Hairline Stainless Steel			S
Skirt panel	Hairline Stainless Steel			S
Pedal				
Pedal	S1000/S800	One Piece Aluminum Alloy Die-casting		S
	S1400	Stainless Steel		S
		One Piece Aluminum Alloy Die-casting		O
Demarcation Line		Paint (Yellow) for S800 and S1000		S
		Synthetic Rubber (Yellow) for S1400		S
Floor plate				
Comb Plate	Aluminum Alloy Die-casting			S
Floor Plate	Hairline Stainless Steel			S
	Aluminum Alloy			O
Item		S800	S1000	S1400
Pedal Width (mm)		800	1000	1400
Maximum length (m)		100m, Suitable for the horizontal type		
Maximum Lifting Height (m)		9.0, Suitable for the inclined type		
Angle of Inclination		12°	0°/ 12°	0°
Rated Speed (m/s)		0.5		
Maximum transport capacity (person/ hour)		4800	6000	6000
Power Supply		Three-Phase and Five-Wire 380V 50HZ Single Phase 220V 50HZ		

List of Configuration Specification

S Standard O Optional — Not Provided

No.	Function	Description	Configuration		
			FEC Escalator		FRG Moving Walk
			Indoor	Outdoor	Indoor
1	Phase loss (phase failure, phase reversal) protection	When the power supply has a phase failure, phase loss, or reverse phase, the protection device can automatically detect and cut off the circuit, stopping the escalator or moving walkway.	S	S	S
2	Motor overload protection	The motor is equipped with an overheat and overcurrent protection device. If an abnormality is detected, the escalator or moving walkway stops operating.	S	S	S
3	Electrical circuit protection device	An automatic circuit breaker is provided to protect the circuits and power components of the escalator or moving walkway.	S	S	S
4	Handrail entry protection device	A protective device is installed at the handrail entry. If a foreign object gets stuck in the guard, the escalator or moving walkway stops operating.	S	S	S
5	Comb plate safety device	If a foreign object becomes trapped between the steps, pallets, and comb plate, the escalator or moving walkway stops automatically.	S	S	S
6	Step and pallet collapse protection device	If any part of a step or pallet collapses and no longer engages with the comb plate, the escalator or moving walkway stops before the collapsed component reaches the comb intersection line.	S	S	S
7	Step and pallet missing detection device	A step or pallet operation detection sensor is installed at the turning point. If a missing step or pallet is detected, the escalator or moving walkway stops running.	S	S	S
8	Main drive chain break protection device	If the drive chain becomes overstretched or breaks, the escalator or moving walkway stops operating.	S	S	S
9	Step chain protection safety device	If the step chain becomes overstretched or breaks, the escalator or moving walkway stops operating.	S	S	S
10	Overspeed protection device	The escalator or moving walkway stops running before its speed exceeds 1.2 times the nominal speed.	S	S	S
11	Unintended reversal protection device	If the escalator or moving walkway is detected to change from its specified operating direction, it stops running.	S	S	S
12	Service Brake	When power is insufficient or any safety device is activated, the braking device engages through spring force, causing the escalator or moving walkway to stop operating.	S	S	S
13	Auxiliary brake (H>6000)	Before the speed exceeds 1.4 times the nominal speed, or if the steps/pallets change direction, or if the main drive chain breaks, the protection device activates, stopping the escalator or moving walkway.	S	S	S
14	Emergency stop button	Emergency stop devices are installed at the upper and lower entrances. In the event of an emergency, they can stop the escalator or moving walkway.	S	S	S
15	Skirt panel protection device	If a foreign object is trapped in the gap between the step, pallet, and skirt panel, the escalator or moving walkway stops operating.	S	S	O
16	Step electrostatic protection device	Static brushes are installed along the escalator path to prevent static electricity buildup.	S	S	S
17	Brake release detection device	The system detects whether the escalator or moving walkway brake is functioning correctly and effectively.	S	S	S
18	Machine room control box stop button	In the lower machine room, pressing the emergency stop button stops the escalator or moving walkway.	S	S	S

List of Configuration Specification

S Standard O Optional — Not Provided

No.	Function	Description	Configuration		
			FEC Escalator		FRG Moving Walk
			Indoor	Outdoor	Indoor
19	Handrail speed detection device	When the handrail speed deviates from the actual step or pallet speed by more than -15% for more than 15 seconds, the escalator or moving walkway stops operating.	S	S	S
20	Anti-clamping device (skirt brush)	Device to reduce the risk of pinching between steps and apron boards.	S	S	O
21	Inspection floor cover plate open detection	When the floor cover plate is opened, the escalator or moving walkway stops operating.	S	S	S
22	Stop distance monitoring device	If the stopping distance exceeds 1.2 times the maximum specified stopping distance, the escalator or moving walkway can only restart after the fault lock has been reset.	S	S	S
23	Handrail electrostatic protection device	Prevents static electricity caused by friction between the handrail and the guide rail during operation.	S	S	S
24	Start buzzer alarm	When the escalator or moving walkway starts, a buzzer sounds to alert passengers.	S	S	S
25	Water level switch	If the water level in the lower machine room reaches a certain height, the escalator or moving walkway stops operating.	O	S	O
26	Upper control box fault display	When a safety switch is triggered, the fault screen displays a code indicating the issue.	S	S	S
27	Upper and lower machine room protective cover	Installed at the drive station or turning station of the escalator or moving walkway to protect the safety of maintenance personnel.	S	S	S
28	Yellow warning line marking	The yellow warning line is located at the front and sides of the escalator steps and both sides of the moving walkway pedals, warning passengers not to stand between adjacent steps or on the edges of steps and pedals.	S	S	S
29	Step gap warning light	Green LED lights are installed below the entry and exit steps or pedals to help passengers easily identify the boundary between the starting steps or pedals, improving safety.	O	O	O
30	Comb plate lighting	Lighting is installed on the skirt panels at the upper and lower entrances to illuminate the steps, pedals, and comb plates, assisting passengers in safely using the escalator or moving walkway.	O	O	O
31	External operation direction indicator	Provides passengers with a clear indication of the operating direction of the escalator or moving walkway, enhancing safety.	O	O	O
32	Energy-saving system	An energy-saving mode in which the escalator or moving walkway either stops when there is no load or runs at a speed lower than the nominal speed. (This device uses a diffuse reflection microwave sensor to detect passenger movement, effectively preventing interference from light and color.)	O	O	O
33	Automatic lubrication device	Automatically lubricates each transmission chain based on the set time.	O	S	O
34	Step surge safety protection device	If a foreign object gets caught between the steps or if the steps are pushed upward, the escalator stops operating.	O	O	—
35	Handrail break protection	If the handrail breaks, the escalator or moving walkway stops operating.	O	O	O
36	Maintenance lock	Switches between normal and maintenance mode to prevent accidental operation during maintenance.	O	O	O

Civic Construction Requirement

(User Responsibility)

Relevant Construction

1. Install support beams and openings for escalators and moving walkways, including beams for intermediate supports. Install lifting hooks under the civil floor slab or reserve conduit holes in the ceiling for hoisting the truss and support beams of the escalator & moving walkway.
2. Perform waterproofing works for the pit structure.
3. Restore and decorate the relevant areas after the installation of the escalator & moving walkway.
4. Install safety railings and other protective measures around the escalator & moving walkway during installation and commissioning to prevent construction personnel from falling.
5. Reserve entry points and ensure passageways for transporting trusses to the installation position inside the building. After installation, carry out restoration work on the reserved openings.
6. Provide on-site storage facilities for materials.
7. Carry out external decorative work for the escalator & moving walkway. Install lighting on exterior decorative panels if required.
8. Install fire-resistant roller shutters and fire sprinkler systems if required.

Relevant Electric Engineering

1. Carry out the wiring installation to the machine room control cabinet inside the escalator & moving walkway truss, including power and lighting cables, grounding wires, and communication cables for remote monitoring and other systems.
2. Install conduit and cables from the escalator & moving walkway to the fire-resistant roller shutter door (if required).
3. Provide external decorative lighting and switches (if required).
4. Supply electrical power required for installation and commissioning.
5. Provide emergency lighting.

Surrounding Safety Measures

1. If there are gaps between escalators & moving walkways or between them and the building floor, entry prevention panels and safety railings must be provided to prevent falls.
2. If the gap between two adjacent escalators & moving walkways, or the gap between an escalator & a moving walkway, exceeds **200 mm**, a fall protection safety net must be installed.
3. To prevent children from playing on or around escalators & moving walkways, signs, warning boards, or public notice facilities must be installed.
4. **Vertical Protective Panels**

If the building structure poses a risk of injury, appropriate preventive measures must be taken. In particular, at intersections with floor slabs and between intersecting escalators & moving walkways, a vertical protective panel with no sharp edges should be installed above the handrail. This panel should be at least **0.3 m** in height and extend at least **25 mm** below the lower edge of the handrail.

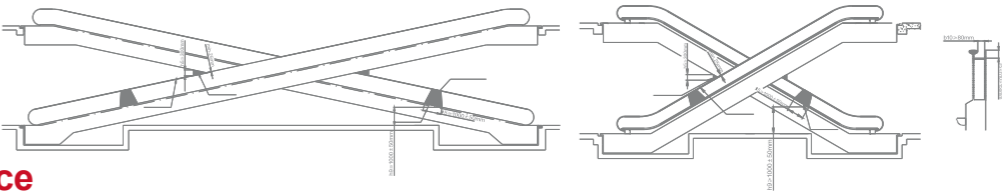
For example, a perforated triangular plate can be used. However, if the distance between the outer edge of the handrail and any building structure is **400 mm** or more, this requirement does not apply.

Civic Construction Requirement

(User Responsibility)

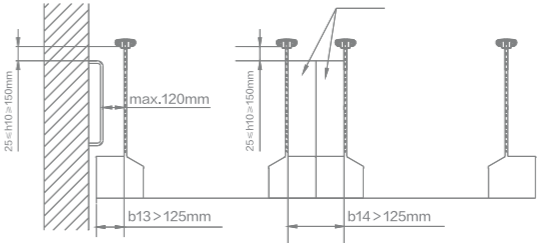
Anti-climb Device

The handrail system should not have any areas where personnel can stand. If there is a risk of people falling, appropriate measures should be taken to prevent individuals from climbing onto the outer side of the handrail system. To ensure this, an anti-climbing device should be installed on the outer deck of inclined-type moving walkways. The anti-climbing device should be positioned at a height of **1000 ± 50mm** above the ground level, with its lower part intersecting the outer deck. The extension length in the direction of the outer deck should be no less than **1000mm**, ensuring that no footholds exist within this range. The height of this device should be at least flush with the surface of the handrail and must comply with the dimensional requirements specified in **Figure 1**. The fasteners used to secure the anti-climbing device should have non-standard heads to prevent unauthorized removal.



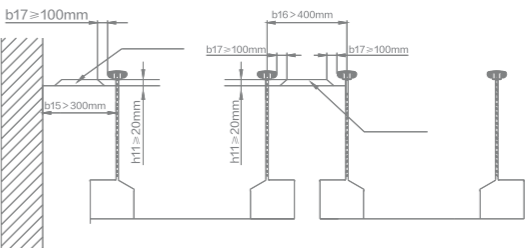
Stop Device

When a moving walkway is adjacent to a wall and the width of the outer deck **b13** exceeds **125 mm**, a blocking device should be installed at the upper and lower ends of the moving walkway to prevent people from entering the outer deck area. Similarly, when two moving walkways are arranged in parallel and share an outer deck with a width **b14** greater than **125 mm**, this blocking device should also be installed. The blocking device should extend to a height of **h10**. The fasteners used for securing the blocking device should have non-standard heads to prevent unauthorized removal.



Anti-skid device

When an inclined moving walkway has a handrail cover plate near the height of the handrail and the distance **b13** between the building (wall) and the centerline of the handrail exceeds **300 mm**, an anti-slip device should be installed on the handrail cover plate. This device should include components fixed to the handrail cover plate, maintaining a minimum distance **b17** of **100 mm** from the handrail. The spacing between anti-slip devices should not exceed **1,800 mm**, and their height **h11** should be at least **20 mm**. The anti-slip device should be free of sharp edges or corners. For adjacent, parallel inclined moving walkways where the distance **B16** between the centerlines of the handrails exceeds **400 mm**, the same requirements must be met.



Put Clients First, Time Is Life

Shanghai Fuji Elevator integrates the service philosophy of "Customer First, Time is Life" into every aspect of its service process. From pre-sales to sales and after-sales, Shanghai Fuji Elevator has established a rigorous service management system, actively responding to customer inquiries, providing detailed usage guidance, and ensuring swift action for installation and maintenance. Through high-quality service, we have earned the high recognition and trust of our customers.



Comprehensive Service Throughout the Entire Lifecycle

From the initial civil construction phase to the entire lifetime of the product, Shanghai Fuji Elevator provides meticulous and customer-centric services every step of the way.

24-Hour Emergency Repair Service

Shanghai Fuji Elevator has established a dedicated 24-hour customer service hotline for urgent troubleshooting, ensuring prompt assistance whenever needed.

Five-star Service Team

The five-star service team of SHANGHAI FUJI ELEVATOR has outstanding technical skills and high-level service ability and provides efficient comfortable excellent experiences for users.

Distribution network across the globe

SHANGHAI FUJI ELEVATOR has set up distributor networks in many countries and regions across the globe with products and services serving many iconic buildings.

